

Millerstown

Bicycle/Pedestrian Connectivity Master Plan



Public Meeting #2 - February 20, 2024

Agenda



- 1. Team Introduction**
- 2. Project Scope**
- 3. Meeting Schedule**
- 4. Public Meeting 1 Recap**
- 5. Inventory**
- 6. Existing Conditions Analysis & Design**
- 7. Next Steps**
- 8. Discussion**

Project Client



MCSi

Mike Hartley, MCSi Board Member

PO Box 193

5 North Market Street

Millerstown, PA 17062

MDTLHARTLEY@gmail.com

(717) 589-3598



In cooperation with the
Borough of Millerstown

Millerstown.org

Funded by Harrisburg Area Transportation Study (HATS)
Regional Transportation Project and Millerstown Community
Success Inc. (MCSI).

Project Team



Simone Collins

Peter Simone, RLA, FASLA
psimone@simonecollins.com
(610) 239-7601x12

Leonard Bustos, Staff LA
lbustos@simonecollins.com
(610) 239-7601x19

Geoff Creary, LA

gcreary@simoncecollins.com
(610) 239-7601x13

Dawood

Lori Ware, PE, PTOE
Manager of Traffic Services
Dawood Engineering, Inc.
lori.ware@dawood.net
(855) 432-9663 x1503

Christopher Cummings, EIT
Highway Designer II
Dawood Engineering, Inc.
christopher.cummings@dawood.net

Scott Bechard, AICP

Senior Transportation Planner
Dawood Engineering, Inc.
scott.bechard@dawood.net

Simone Collins

Simone Collins Landscape Architecture is a planning and design firm committed to creating an ecologically enduring society



Conduct
careful
research



Respect
ecological
context and
limits of each
site



Build
on sustainable
practices of the
past



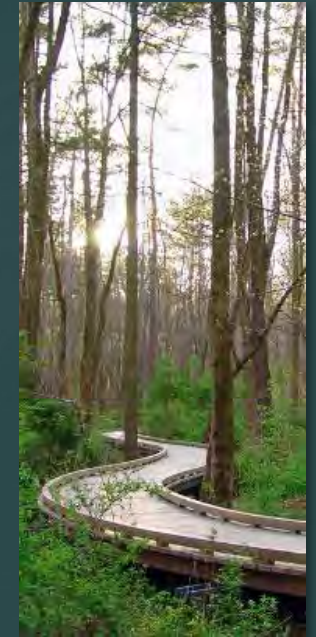
Employ
new methods
prudently.



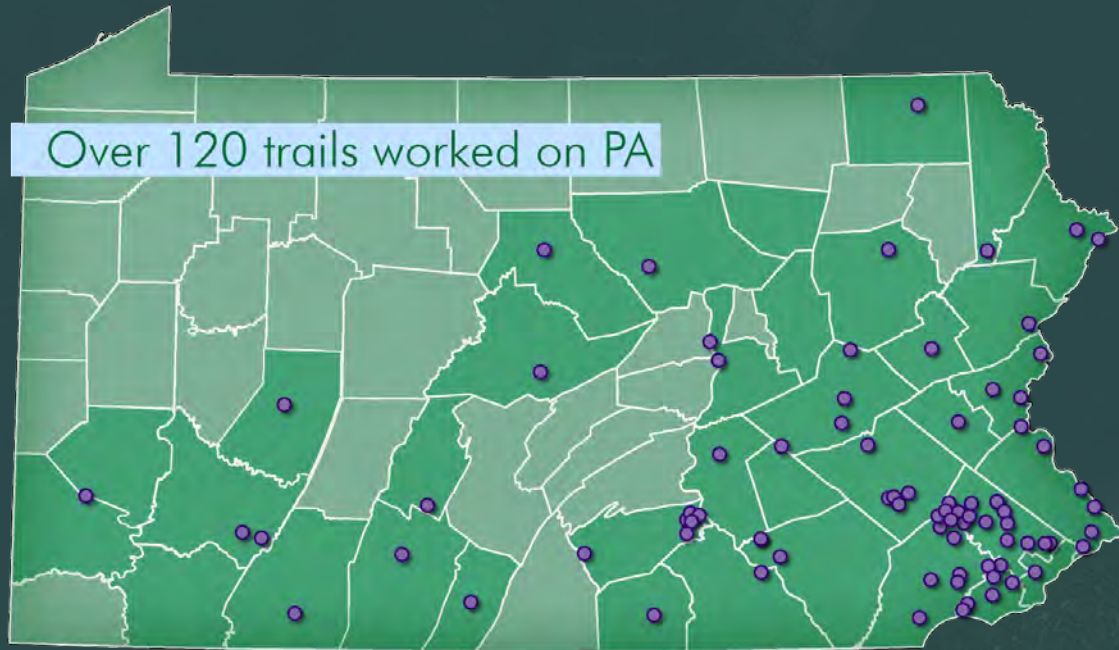
Conserve
materials
and energy



Support
local economies

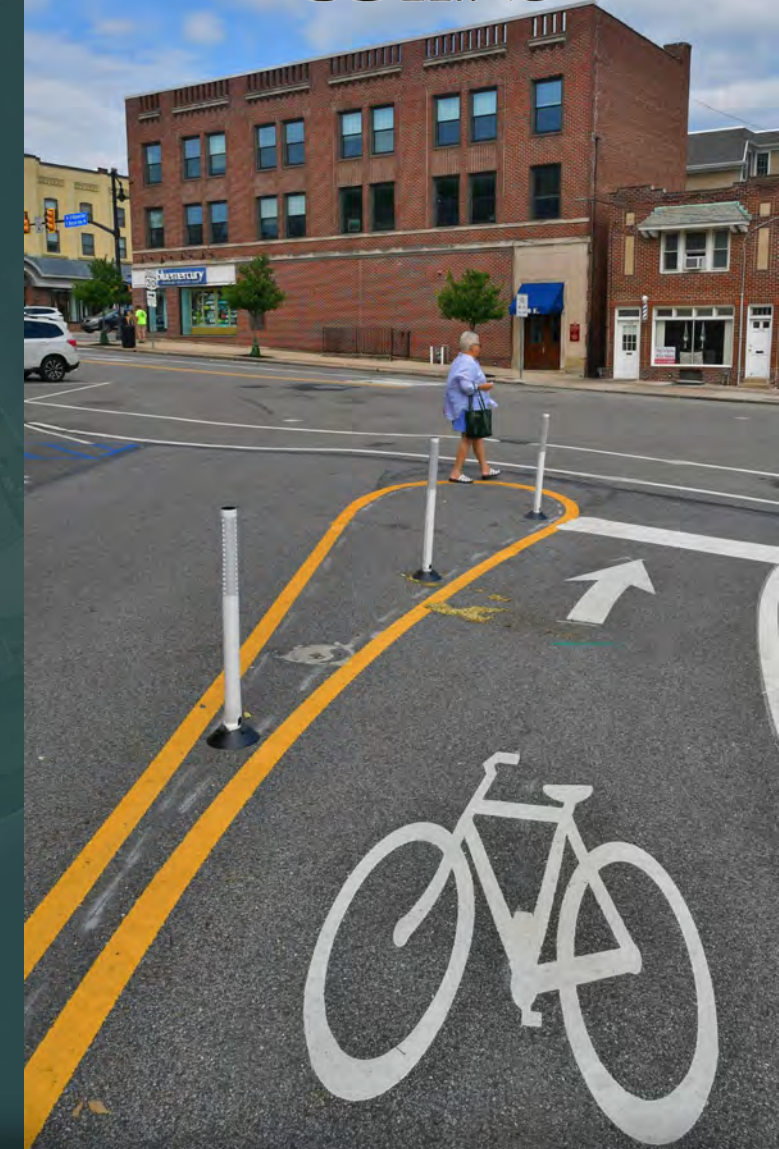


Design
biologically &
culturally
diverse
communities



Simone Collins Landscape Architecture

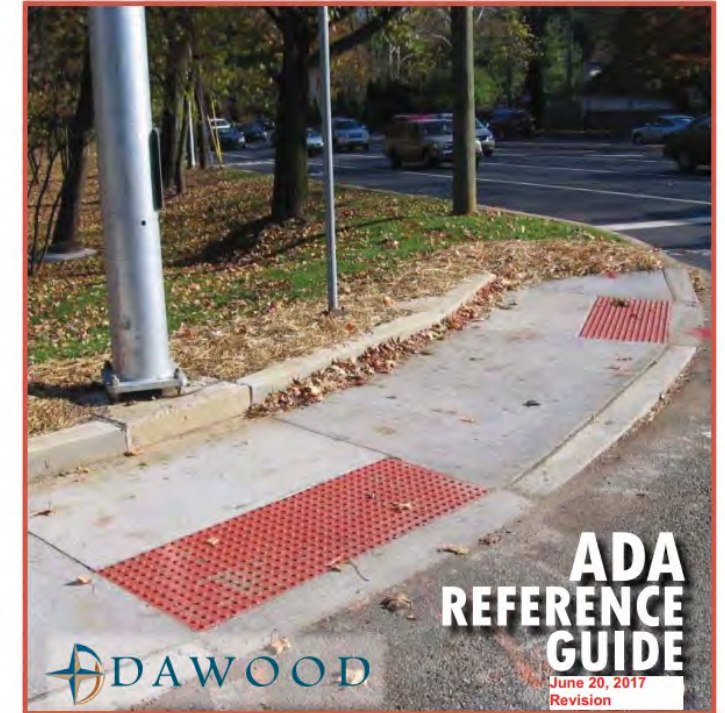
- Founded 1990 – 34th year of service
- Staff of 12 – including: 3 registered LA principals, 1 P.E., 1 AICP
- “Connectivity Projects” – 120+ since 1993
- Public Participation experience – extensive, including controversial projects
- Successful funding strategies – for municipal, county, and NGO clients
- 45 design awards – 17 for trails and bridge projects



Dawood services include highway/traffic, structural, civil, geotechnical, mechanical engineering, survey and GIS services.

Experience:

- **Multimodal Improvement Project:** plan for traffic calming improvements on Seventh Street in Harrisburg, PA
- **ADA Ramp Submissions with PennDOT 6-0:** review and scoping efforts for ADA ramp packages submitted to PennDOT for construction
- **East-West Multimodal Connection:** signing and pavement marking configurations, raised crosswalk designs, and updates to signal permit plans for Chestnut Street in Harrisburg, PA
- **I-95, Section AFC:** signing, pavement marking, traffic control, temporary and permanent traffic signal design, trail design, and coordination with multiple agencies for multiple state routes surrounding I-95 on and off-ramps in Port Richmond area of City of Philadelphia



DISTRICT 6-0





Scope of Services - Creation of a master plan for enhanced, safe bicycle and pedestrian infrastructure in and around Millerstown to enhance multi-modal transportation.

This planning process and these potential improvements are based on the recommendations as contained in the [Millerstown Economic Vitality Plan](#) as prepared by the Perry County Planning Commission and the Perry County Economic Development Authority.

Possible Multimodal Improvements

- Trail improvements to the community park and pool
- Town Square improvements for safety and to make it more people-oriented.
- Safer roadway crossing for school students.
- Improvements to highway ramps including better signage.
- Loop trail around the elementary and high schools
- Better pedestrian and bicycle connections to local destinations
- Set the stage for regional on-road bike routes to other destinations

Meeting Schedule

Public Meeting #2

Borough Council Meeting

- Monday, February 20th, 7pm to 9pm at Greenwood Elementary School
- Monday, April 1 at 7pm at Borough Hall, 44 North High Street
- *Key Person / Key Agency Interviews (community park / community pool/ first responders, School District, Borough officials, etc.)*
- *Meeting with PennDOT District 8-0, date TBD*

Public Meeting #3

Borough Council Meeting

- Tuesday, May 14, 7pm to 9pm at Greenwood Elementary School
- *Meeting with HATS, date TBD*
- Monday, June 3 at Borough Hall, 44 North High Street

Millerstown

Bicycle/Pedestrian Connectivity Master Plan
BOROUGH OF MILLERSTOWN, PERRY COUNTY, PENNSYLVANIA

Public Meeting 1 Recap



FIX SIDEWALKS —
SIDEWALKS TO WEST
ALONG MARKET —
TRAFFIC CIRCLE ?
HATE TRIANGLES !
CONFUSING !
KEEP SQUARE BEAUTIFUL



Public Meeting #1 Review

16 Attendees

School

- Strong support for making routes to school safer
- Many parents drive their children to school
- Poor sidewalk conditions noted
- Some use river path to park / pool – other use Market St. (w/o walks)

Town Square

- Pedestrian crossing seen as dangerous
- Better with 4-way stop? Traffic Circle?
- High number of trucks come through Square
- Some did not like triangles
- Sea of Asphalt now, make it greener
- Beautification desired
- Dining tables, seating

Destinations

- Sidewalks lacking to many destinations
- Sidewalks in poor condition in many locations



Public Meeting #1 Review

River Path

- Not apparent to people outside of town
- Private motor vehicles drive on pathway (downstream of bridge)
- Path upstream of bridge, mostly overgrown
- Should vehicle access be regulated?
- Fire Dept uses access occasionally
- Lights on the path would be great
- SC noted that river path is PennDOT-owned, floods frequently

Other Topics

- Route of 911 Trail currently goes through town
- Pedestrian bridge over Sunbury Street suggested
- Exit traffic from school (am and pm) causes back-ups



Millerstown

Bicycle/Pedestrian Connectivity Master Plan
BOROUGH OF MILLERSTOWN, PERRY COUNTY, PENNSYLVANIA

Inventory



Millerstown - Inventory



Millerstown - Inventory



Millerstown - Inventory

LEGEND

 Sidewalk

 Crosswalk

Analysis

Many gaps in sidewalks

Minimal connections to schools

Few crosswalks, some not correct



Millerstown - Inventory

LEGEND

-  Sidewalk
-  Crosswalk
-  Walkway

Analysis

- Many gaps in sidewalks
- Minimal connections to schools
- Few crosswalks, some not correct
- Basic school walkways
- PennDOT Maintenance Road



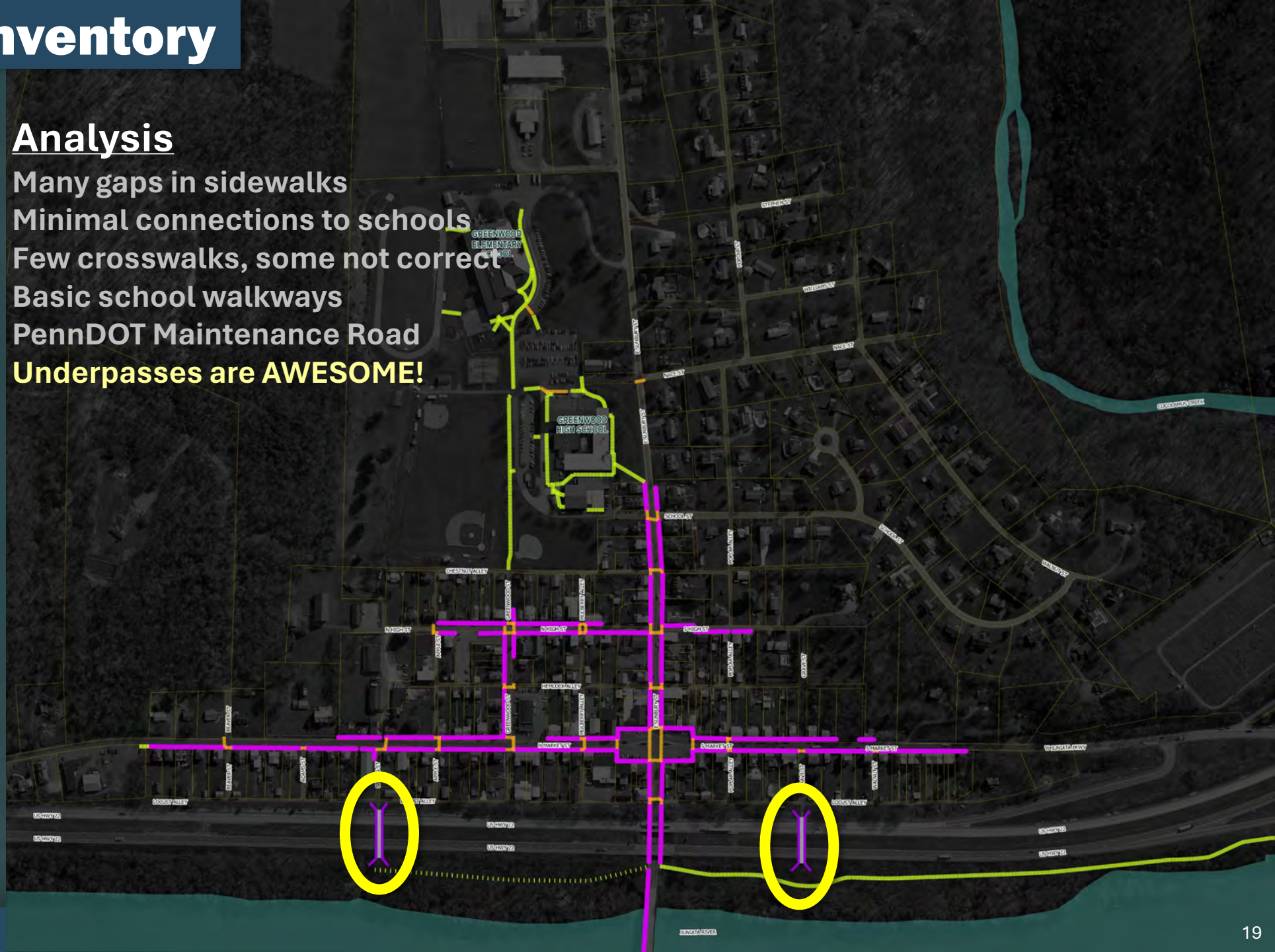
Millerstown - Inventory

LEGEND

-  Sidewalk
-  Crosswalk
-  Walkway
-  Underpass

Analysis

- Many gaps in sidewalks
- Minimal connections to schools
- Few crosswalks, some not correct
- Basic school walkways
- PennDOT Maintenance Road
- Underpasses are **AWESOME!**



Millerstown - Inventory

LEGEND

-  Sidewalk
-  Crosswalk
-  Walkway
-  Underpass

DESTINATIONS

-  School
-  Business
-  Restaurant

Analysis

- Many gaps in sidewalks
- Minimal connections to schools
- Few crosswalks, some not correct
- Basic school walkways
- PennDOT Maintenance Road
- Underpasses are AWESOME!
- Goal – bike/ped connections



Millerstown - Inventory

LEGEND

-  Sidewalk
-  Crosswalk
-  Walkway
-  Underpass

DESTINATIONS

-  School
-  Business
-  Restaurant

PLANNED TRAILS

-  911 National Memorial Trail

Analysis

- Many gaps in sidewalks
- Minimal connections to schools
- Few crosswalks, some not correct
- Basic school walkways
- PennDOT Maintenance Road
- Underpasses are AWESOME!
- Goal – bike/ped connections
- 911 Trail Route an opportunity



Millerstown - Inventory

LEGEND

-  Sidewalk
-  Crosswalk
-  Walkway
-  Underpass

DESTINATIONS

-  School
-  Business
-  Restaurant

PLANNED TRAILS

-  911 National Memorial Trail

EXISTING TRAIL

-  Juniata Water Trail

Analysis

- Many gaps in sidewalks
- Minimal connections to schools
- Few crosswalks, some not correct
- Basic school walkways
- PennDOT Maintenance Road
- Underpasses are AWESOME!
- Goal – bike/ped connections
- 911 Trail Route opportunity
- Juniata Water Trail opportunity



Millerstown

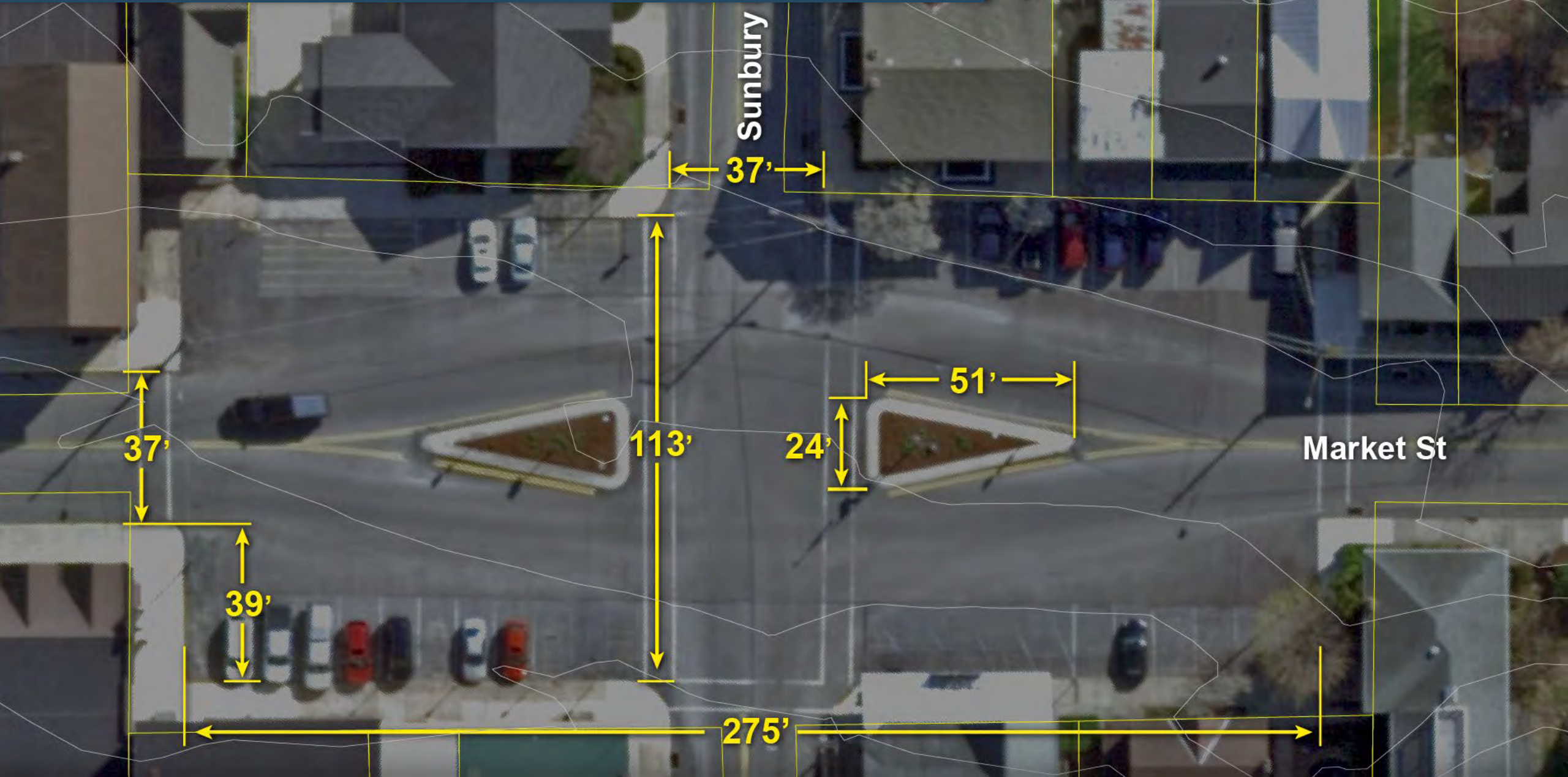
Existing Conditions Analysis & Design

Bicycle/Pedestrian Connectivity Master Plan

BOROUGH OF MILLERSTOWN, PERRY COUNTY, PENNSYLVANIA



Existing Conditions Analysis & Design



Existing Conditions Analysis & Design



The unplanned evolution of historic town square has created a chaotic, and intimidating streetscape. There is a need to reverse the mis-steps of the past in keeping with the spirit of recently passed federal legislation that promotes safe streets and roads for all.

Existing Conditions Analysis & Design



Safety for all modes of travel – redesign town square to create fewer opportunities for mistakes. Create clarity of direction and modal responsibilities. Err on the side of safety vs. a few less seconds of travel time. Create a four-way all stop at the intersection to eliminate any ambiguity for vehicular movement through the square and to enhance pedestrian safety.

Existing Conditions Analysis & Design



Bellevue, Washington



Manayunk

Create a setting conducive to economic revitalization – a place people want to be. Create more generous sidewalks as a setting for el fresco dining and new street life. Allow residents and visitors safe vantage points to enjoy the historic town square setting. Clearly separate pedestrian space from motor vehicle space and minimize the possible pedestrian / vehicular conflict points. Celebrate the heritage and beauty of this unique place.

Existing Conditions Analysis & Design



Pottstown, PA

Maintain street front parking. However, eliminate the potentially dangerous back-out movement into travel lanes by creating back-in angled parking. This allows drivers to pull out while seeing on-coming traffic.

Town Square Existing Conditions

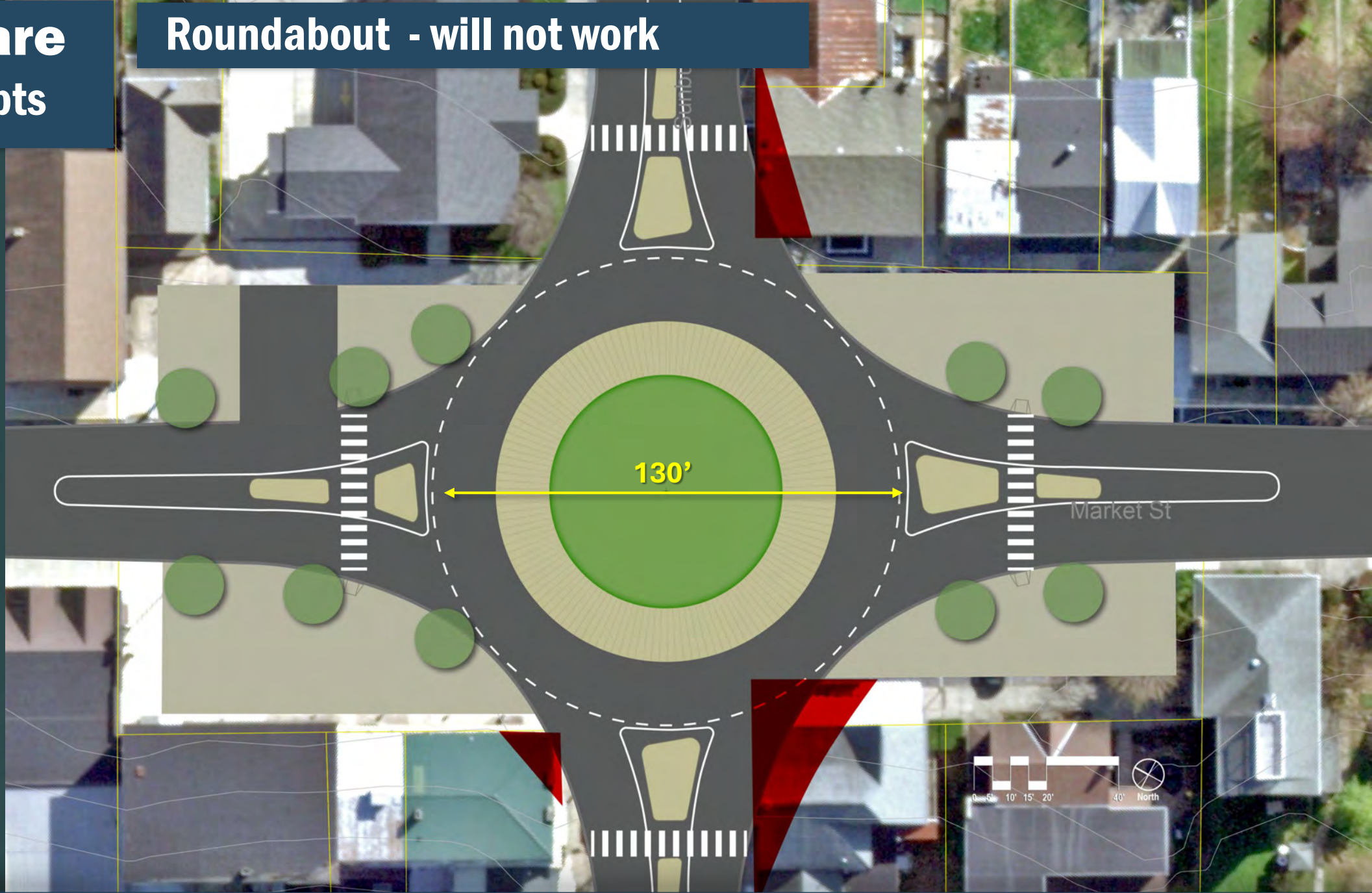


Town Square Design Concepts

Roundabout - will not work

Option 1

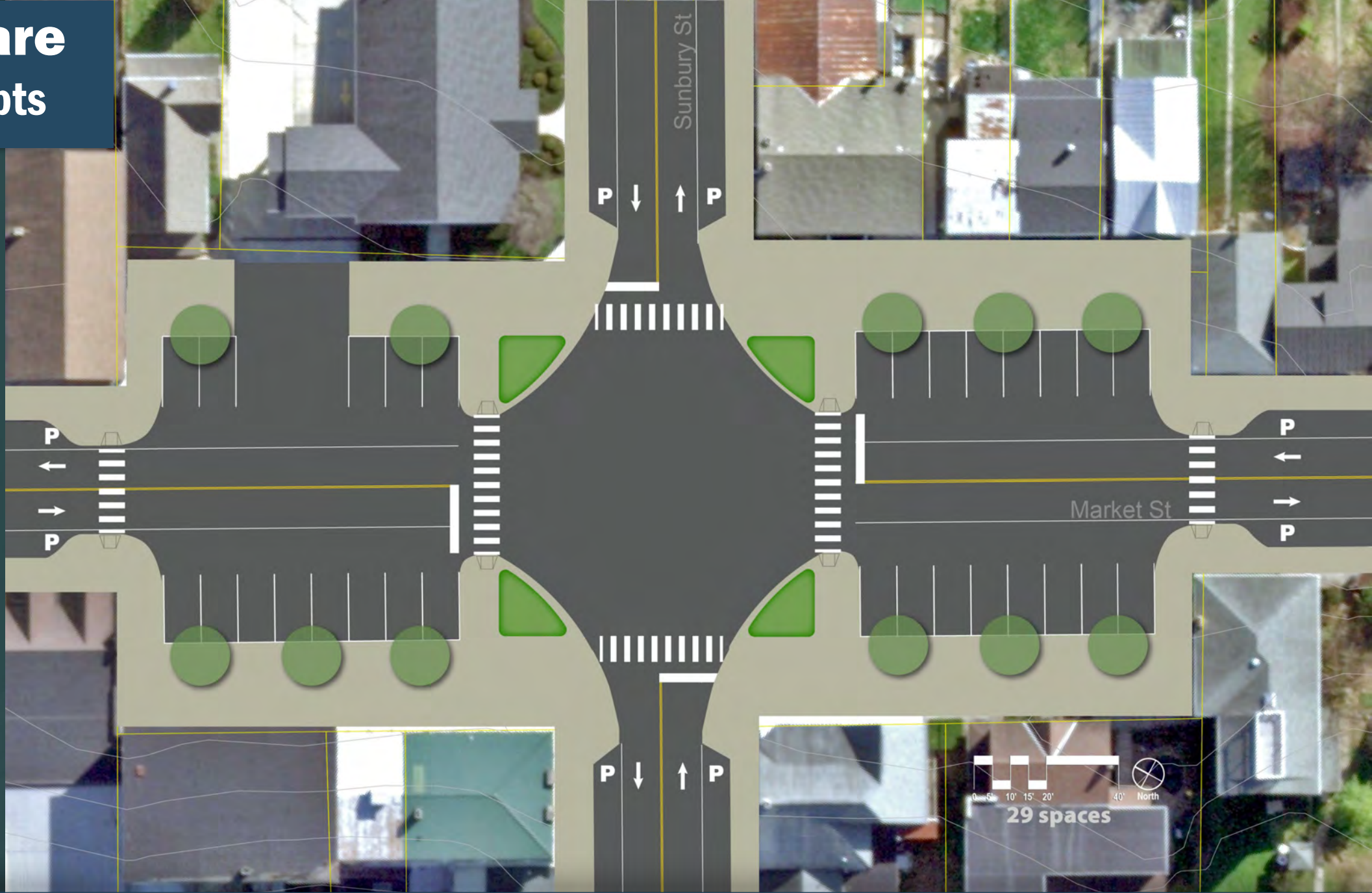
The smallest roundabout possible would still require some property takes. It creates a lot of unusable space in the center. It slows but does not stop through traffic. No room for parking.



Town Square Design Concepts

Option 2

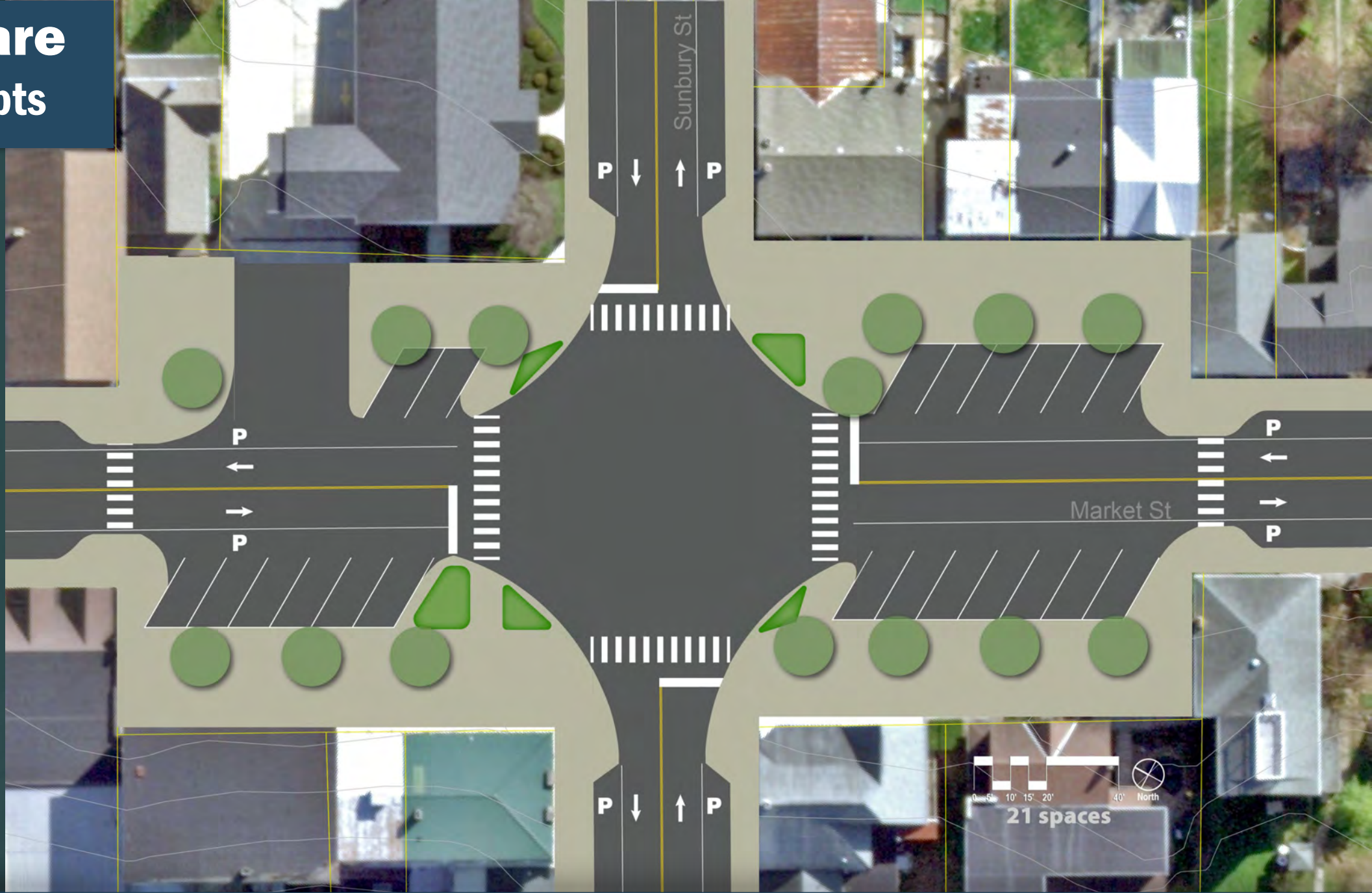
4-way Stop.
Remove center
islands. Shorten
pedestrian
crossings. Maintain
90 degree head-in
parking.



Town Square Design Concepts

Option 3

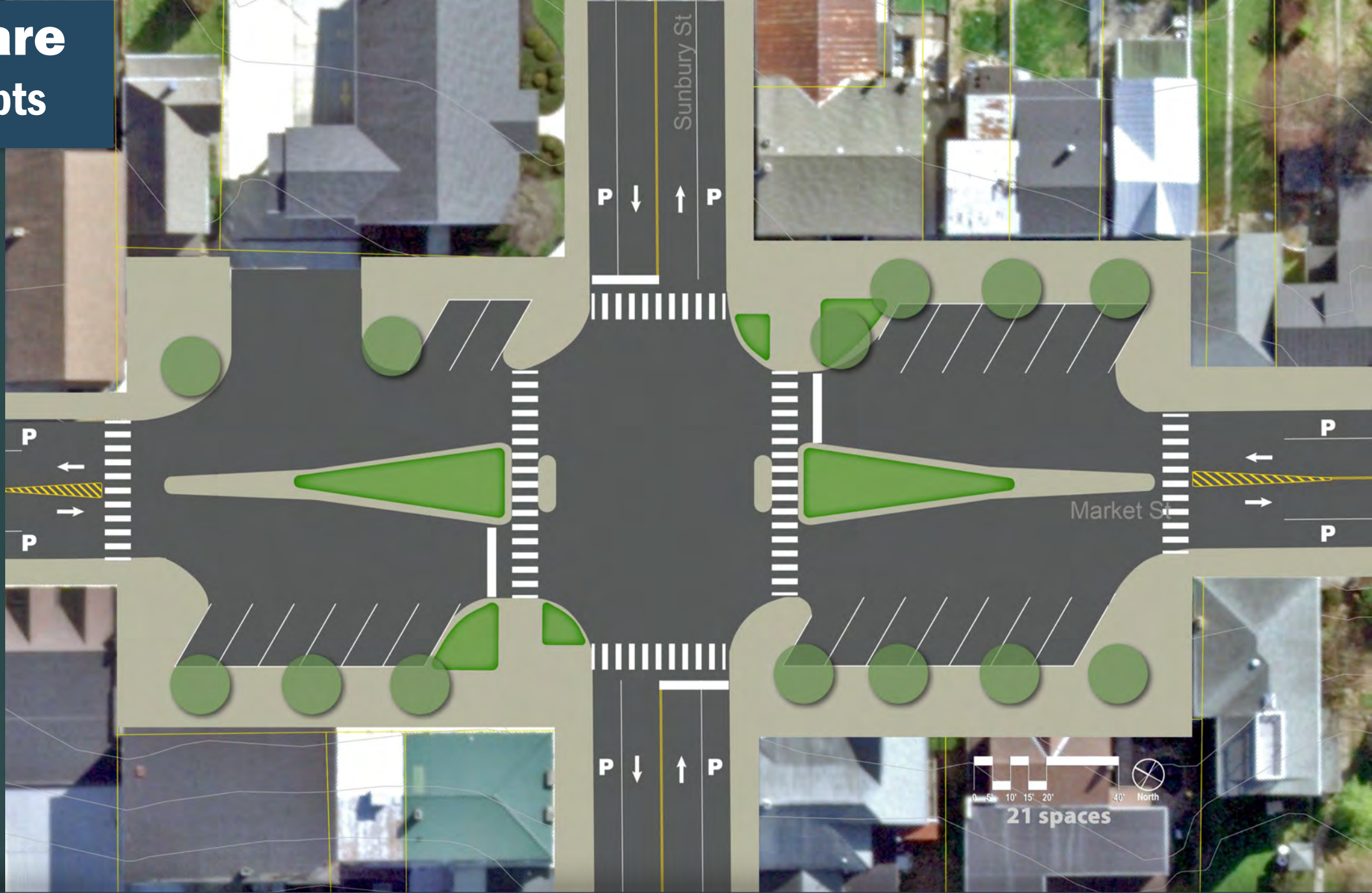
4-way
Stop. Remove
center islands.
Shorten pedestrian
crossings. Create
back-in
angled parking.



Town Square Design Concepts

Option 4

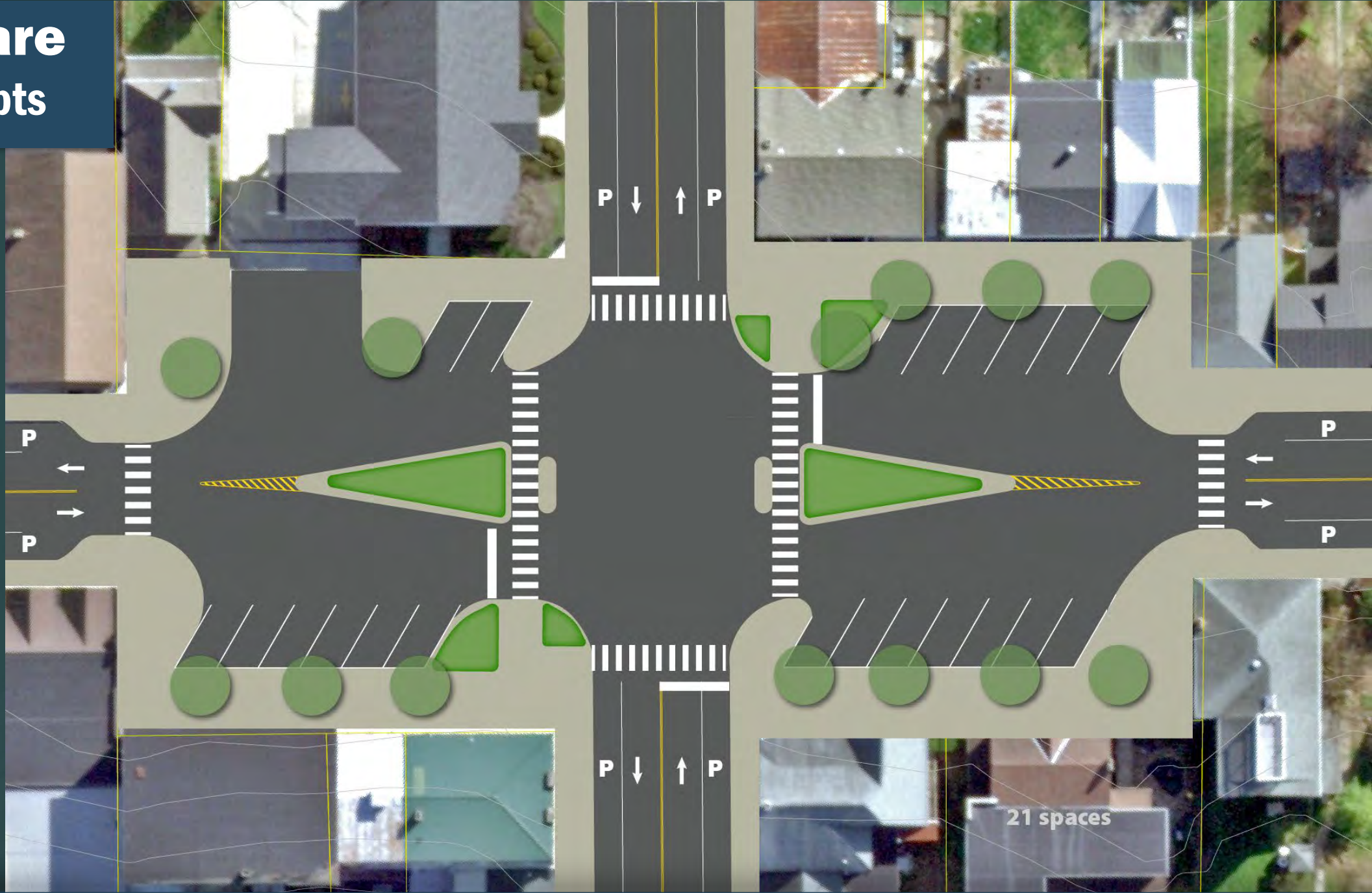
4-Way
Stop. Maintain and
enlarge
center islands.
These act as
"refuge Islands" for
pedestrians. Back-
in angled
parking. Longer isl
ands prevent
u-turns.



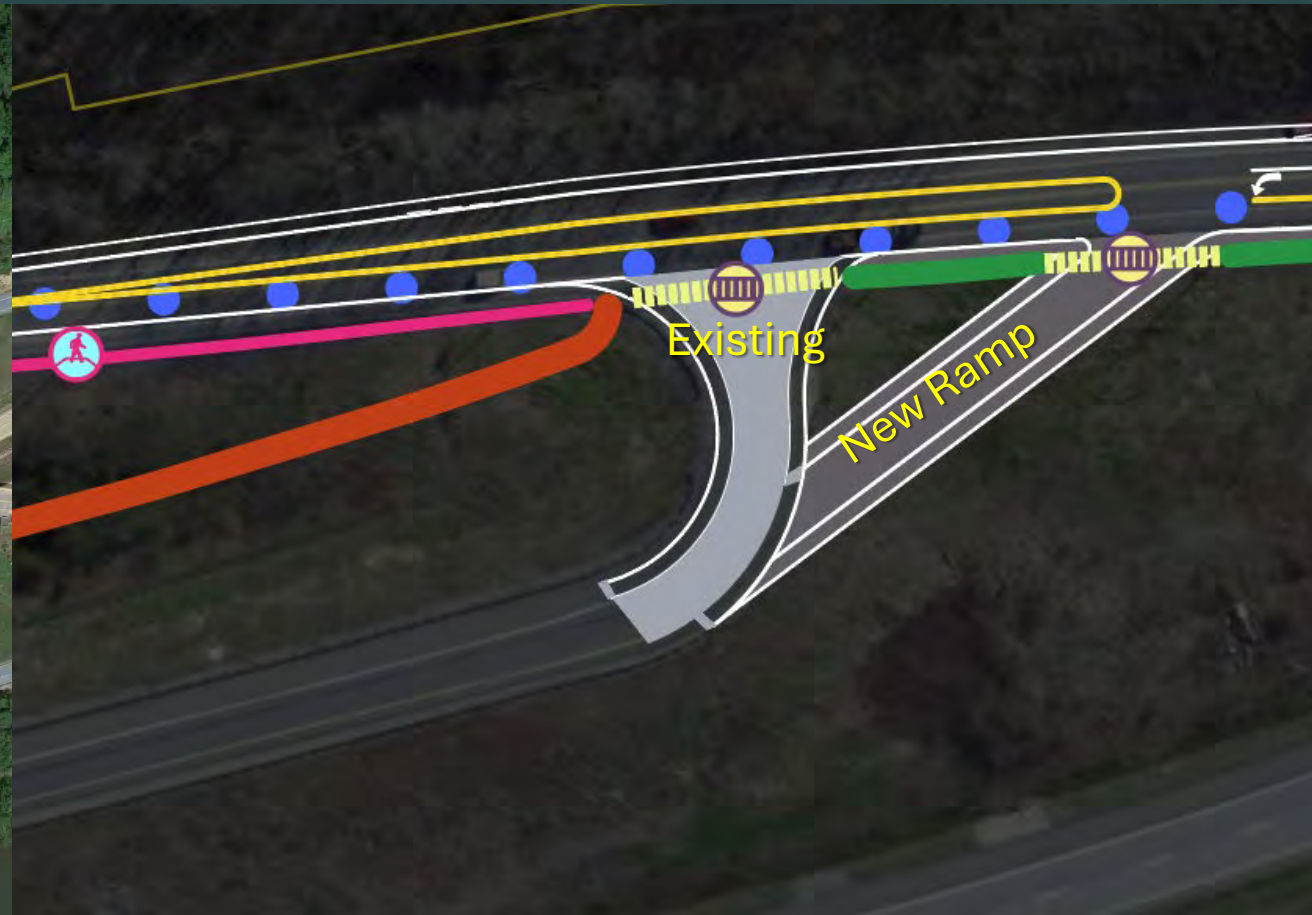
Town Square Design Concepts

Option 5

Same as option #4
except shorten the
length of the center
islands.



Existing Conditions Analysis & Design



Redesign and rebuild the entry to the Rt. 22 north-bound ramp that is located south of the village. Create a ramp with a more generous turning radius to reduce the amount of truck traffic through Town Square.

Existing Conditions Analysis & Design



LEGEND	
EXISTING	PROPOSED
Parcel	Sidewalk
2' Contour	Painted Sidewalk
Sidewalk	Crosswalk
Crosswalk	Multi-Use Trail
Walkway	Side Path
Underpass	Bike Boulevard
Juniata Water Trail	Sharrow
Juniata Water Trail Landing	Speed Cushion
	Pedestrian Refuge Island
PLANNED TRAILS	Rapid Flashing Beacon
911 National Memorial Trail	Bump Out
	Bollard
	Buffer Planting



Safe Routes to Schools – Add sidewalks, crosswalks, traffic control devices, warning signage and other improvements to enhance pedestrian and bicycle travel routes to and from the Middle School and High School. Include pedestrian scale lighting along sidewalks to account for after-hours activities as the schools which are educational, sports and social hubs of the community.

Existing Conditions Analysis & Design



Nace Street

Sunbury
Street

Existing Conditions Analysis & Design



Nace Street

Sunbury Street

Existing Conditions Analysis & Design



Spring Street

Existing Conditions Analysis & Design



Spring Street

Existing Conditions Analysis & Design



N Market Street

Existing Conditions Analysis & Design



N Market Street

Existing Conditions Analysis & Design

LEGEND

EXISTING

- Parcel
- 2' Contour
- Sidewalk
- Crosswalk
- Walkway
- Underpass
- Juniata Water Trail
- Juniata Water Trail Landing

PLANNED TRAILS

- 911 National Memorial Trail



PROPOSED

- Sidewalk
- Painted Sidewalk
- Crosswalk
- Multi-Use Trail
- Side Path
- Bike Boulevard
- Sharrow
- Speed Cushion
- Pedestrian Refuge Island
- Rapid Flashing Beacon
- Bump Out
- Bollard
- Buffer Planting



Safe Routes to Schools - Create loop trail on the Middle School and High School campus. Explore extending this trail to the New Harvest Community Church campus.

Existing Conditions Analysis & Design



E Sunbury Street

Existing Conditions Analysis & Design



E Sunbury Street

Existing Conditions Analysis & Design

LEGEND

EXISTING

- Parcel
- 2' Contour
- Sidewalk
- Crosswalk
- Walkway
- Underpass
- Juniata Water Trail
- Juniata Water Trail Landing

PLANNED TRAILS

- 911 National Memorial Trail



PROPOSED

- Sidewalk
- Painted Sidewalk
- Crosswalk
- Multi-Use Trail
- Side Path
- Bike Boulevard
- Sharrow
- Speed Cushion
- Pedestrian Refuge Island
- Rapid Flashing Beacon
- Bump Out
- Bollard
- Buffer Planting



Reconnecting Communities - Plan and build sidewalks from the village center along northbound Sunbury Street (Rt. 17) in anticipation of future residential development in the northern section of the Borough.

Existing Conditions Analysis & Design



Reconnecting the Community - Enhance and provide lighting for the two pedestrian tunnels under Rt. 22. Enhance the entry pathways to these pedestrian facilities. Add murals by local artists or students on the tunnel walls. Prevent public vehicular access but allow emergency vehicle and PennDOT maintenance vehicles access.

Existing Conditions Analysis & Design



Existing Conditions Analysis & Design





Juniata River Access Sites*

- 51** Granville PFBC-Surfaced Ramp Lat. 40 33 30 Lon. 77 36 11
From Lewistown, south on Rt. 103 to Fairview, right onto N. River Rd., follow to rail bridge. From McVeytown, cross river and take Rt. 103 N. River right.
- 50** Locust Campground Primitive Lat. 40 33 38 Lon. 77 35 59
LocustCampground.com offers many rustic amenities including a 1.5-mile restored section of historic canal. Call 717-248-3974 for more information. River left.
- 46** Victory Park Surfaced Ramp Lat. 40 35 42 Lon. 77 34 44
Take Rt. 22 East into Lewistown, just past the Sheetz® look for signs indicating river access, turn right. River left.
- 40** Lewistown Narrows PFBC-Surfaced Ramp Lat. 40 36 14 Lon. 77 29 16
From Lewistown, take US Rt. 22/322 east 6.5 miles to river access. No entrance from the west-bound lanes. Parking and accessible fishing area. A 1.5 mile limestone trail goes down stream to Lewistown Narrows Canal Park including a museum in a historic lock tender's house. River left.
- 36** Mifflintown PFBC-Surfaced Ramp Lat. 40 35 42 Lon. 77 24 55
From Rt. 22, Arch Rock Rd. exit, follow Arch Rock Rd. south, left onto 28th Division Hwy.,

Reconnecting the Community - Create an official Juniata River Water Trail Landing at upriver underpass

Existing Conditions Analysis & Design



Reconnecting the Community - Create an official Juniata River Water Trail Landing at upriver underpass.

Existing Conditions Analysis & Design



Reconnecting the Community - Work with PennDOT District 8-0 to better maintain the riverfront highway maintenance road that also provides pedestrian and bicycle access between the village and the community park and community pool. Consider pedestrian lighting along this maintenance road. Clear vegetation along road on upriver section.

Existing Conditions Analysis & Design



Reconnecting the Community - Work with PennDOT District 8-0 to add sidewalks along state routes and primary pedestrian routes to reconnect the village to the Community Park and Community Pool.

Existing Conditions Analysis & Design



Locust Alley

Reconnecting the Community - Utilize, improve and extend Locust Alley as a bike boulevard to provide access from the Village to the Community Park and the Community Pool.

Existing Conditions Analysis & Design



Locust Alley

Reconnecting the Community - Utilize, improve and extend Locust Alley as a bike boulevard to provide access from the Village to the Community Park and the Community Pool.

Existing Conditions Analysis & Design



Reconnecting the Community - Redesign Freedom Park located on Market Street to be handicapped accessible with new seating, renewed plantings and for small gatherings. Collaborate with the Antiques Mall as the park is a complement to this business.

Existing Conditions Analysis & Design

WAYFINDING SIGNAGE

MILLERSTOWN

The wayfinding system should be introduced as part of the brand because it plays such an important role in the perception and flow of your community.

PRIMARY GATEWAYS

These gateways are the primary intersection points and main entry ways to town. They need to be highly visible and introduce the brand.

BUILDING MARKERS

The markers can be either wall mounted or monument style and denote important landmarks in the downtown district.

TRAILBLAZERS

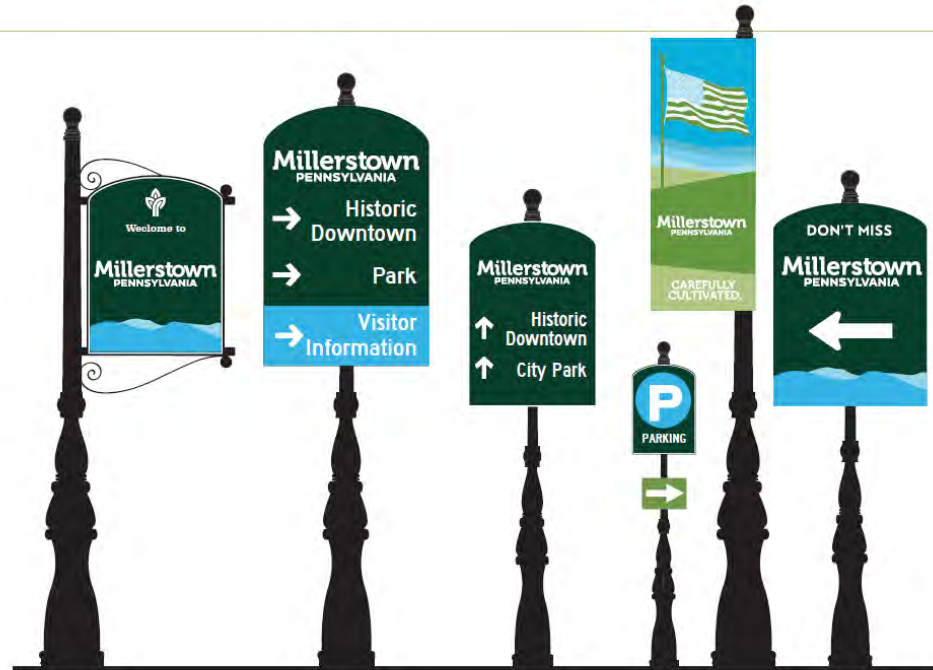
Trailblazers are the directing signs leading motorists to the main attractions in the area. These should have a maximum of three locations per sign and carry motorists from gateway to parking lot. Colors can be used to distinguish between different districts and can become smaller as the scale and speed of the roadway narrows.

STREET BANNERS

Banners are very popular and help to add color and movement to the lanes of travel, acting as a speed calming device. They too can be color coded by district and can promote local events, as well as promoting the brand.

PARKING SIGNAGE

Identifying parking is important in creating a parking system in downtown. Visitors are more likely to walk a block or two to shop if the signage system leads them directly to a public parking lot and tell them how to proceed. The parking markers can be by themselves or as attachments to trailblazer signs.



Proposed wayfinding design for county-wide, community specific wayfinding signage system

MILLERSTOWN | PERRY COUNTY ECONOMIC VITALITY PLAN

Reconnecting the Community - Add to the initial wayfinding signs that will be installed in 2024 by Perry County Economic Development Authority. Add additional signage that notes historic sites, local attractions, and other village attributes.

Existing Conditions Analysis & Design



Concord, North Carolina



East Aurora, New York

Economic Redevelopment – Acknowledge that the creation of pedestrian-friendly spaces and circulation routes can add to the attractiveness of the village for both residents and businesses. Capitalize on existing Borough resources (school facilities, Antique Mall, quaint neighborhoods, lovely architecture, and short commuting times to Harrisburg). Enhance these resources toward attracting new residents and businesses to the community.

Redesign of Town Square will make it safer but also create an overall village character more conducive to reinvestment and redevelopment in the village.

Existing Conditions Analysis & Design



Haddonfield, New Jersey

Millerstown Aesthetics and Visual Appeal – In all proposed improvements in Millerstown, always consider the aesthetic presentation of what is being built. Go beyond simple utility and consider appropriateness of materials and colors while encouraging a diversity of architectural and artistic expression.

Existing Conditions Analysis & Design



Philadelphia, Pennsylvania



Millerstown Aesthetics and Visual Appeal – Embark on an aggressive tree planting program throughout Millerstown. Seek property owner easements to install street trees.

Encourage property owners to plant trees on their own properties that are visible from public streets and walkways.

Existing Conditions Analysis & Design



Millerstown Aesthetics and Visual Appeal – Encourage small-scale aesthetic improvements such as flowers in window boxes and sidewalk planters. Seek out gardeners to advise interested residents on flower species and planting techniques. Hold an annual end of summer competition for the best flower displays.

Existing Conditions Analysis & Design



Millerstown Aesthetics and Visual Appeal – Encourage residents to fly banners along street-fronts. Promote the design and fabrication of one-of-a-kind banners as a local artisanal craft. Hold a banner competition.

Seek our area / local sculptors who may be interested in displaying their artwork in the Town Square. Rotate artists annually.

Public Meeting 2 - Improvements Plan

Millerstown Bicycle/Pedestrian Connectivity Master Plan Public Meeting 2 Preliminary Concepts & Ideas

LEGEND	
EXISTING	PROPOSED
Parcel	Sidewalk
2' Curbout	Painted Sidewalk
Sidewalk	Crosswalk
Crosswalk	Multi-Use Trail
Walkway	Side Path
Underpass	Bike Boulevard
Junata Water Trail	Sharrow
Junata Water Trail Landing	Speed Cushion
	Pedestrian Refuge Island
	Rapid Flashing Beacon
	Bump Out
	Boisard
	Buffer Planting
PLANNED TRAILS	
911 National Memorial Trail	



Millerstown Bicycle/Pedestrian Connectivity Master Plan Public Meeting 2 Preliminary Concepts & Ideas

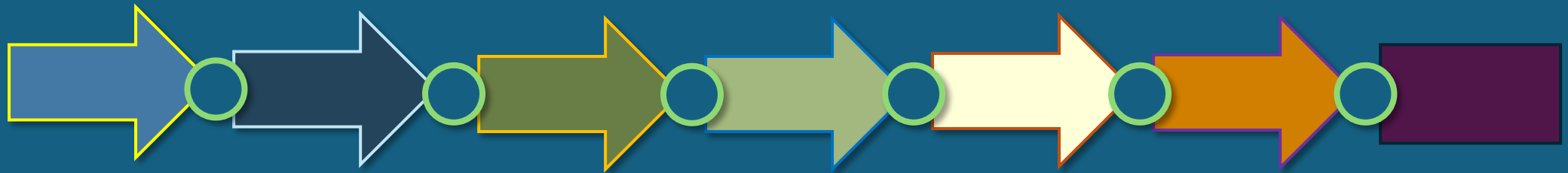
LEGEND	
EXISTING	PROPOSED
Parcel	Sidewalk
2' Curbout	Painted Sidewalk
Sidewalk	Crosswalk
Crosswalk	Multi-Use Trail
Walkway	Side Path
Underpass	Bike Boulevard
Junata Water Trail	Sharrow
Junata Water Trail Landing	Speed Cushion
	Pedestrian Refuge Island
	Rapid Flashing Beacon
	Bump Out
	Boisard
	Buffer Planting
PLANNED TRAILS	
911 National Memorial Trail	



Millerstown

Bicycle/Pedestrian Connectivity Master Plan
BOROUGH OF MILLERSTOWN, PERRY COUNTY, PENNSYLVANIA

Next Steps



Next Steps

Next

Borough Council Meeting

- Monday, April 1 at 7pm at Borough Hall, 44 North High Street
- *Key Person / Key Agency Interviews (community park / community pool/ first responder, School District, Borough officials, etc.)*
- *Meeting with PennDOT District 8-0, date TBD*

Next

Public Meeting

- Tuesday, May 14, 7pm to 9pm at Greenwood Elementary School
- *Meeting with HATS, date TBD*
- Monday, June 3 at Borough Hall, 44 North High Street

Borough Council Meeting



Millerstown

Bicycle/Pedestrian Connectivity Master Plan

BOROUGH OF MILLERSTOWN, PERRY COUNTY, PENNSYLVANIA

Discussion



Simone Collins

Peter Simone, RLA, FASLA
psimone@simonecollins.com
(610) 239-7601x12

Leonard Bustos, Staff LA
lbustos@simonecollins.com
(610) 239-7601x19

Geoff Creary, LA
gcreary@simoncecollins.com
(610) 239-7601x13

Dawood

Lori Ware, PE, PTOE
Manager of Traffic Services
Dawood Engineering, Inc.
lori.ware@dawood.net
(855) 432-9663 x1503

Christopher Cummings, EIT
Highway Designer II
Dawood Engineering, Inc.
christopher.cummings@dawood.net

Scott Bechard, AICP
Senior Transportation Planner
Dawood Engineering, Inc.
scott.bechard@dawood.net