

Millerstown

Bicycle/Pedestrian Connectivity Master Plan



Agenda



1. Team Introduction
2. Project Scope
3. Project Schedule
4. Study Area
5. Data & Inventory
6. Trails 101 – users, design guidelines
7. Intro to the Walk Bike Toolbox
8. Next Steps
9. Discussion



MCSi

Mike Hartley, MCSi Board Member

PO Box 193

5 North Market Street

Millerstown, PA 17062

MDTLHARTLEY@gmail.com

(717) 589-3598



In cooperation with the
Borough of Millerstown

Millerstown.org

Funded by Harrisburg Area Transportation Study (HATS)
Regional Transportation Project and Millerstown Community
Success Inc. (MCSI).



Simone Collins

Peter Simone, RLA, FASLA
psimone@simonecollins.com
(610) 239-7601x12

Leonard Bustos, Staff LA
lbustos@simonecollins.com
(610) 239-7601x19

Geoff Creary, LA
gcreary@simoncecollins.com
(610) 239-7601x13

Dawood

Lori Ware, PE, PTOE
Manager of Traffic Services
Dawood Engineering, Inc.
lori.ware@dawood.net
(855) 432-9663 x1503

Christopher Cummings, EIT
Highway Designer II
Dawood Engineering, Inc.
christopher.cummings@dawood.net

Scott Bechard, AICP
Senior Transportation Planner
Dawood Engineering, Inc.
scott.bechard@dawood.net

Simone Collins Landscape Architecture is a planning and design firm committed to creating an ecologically enduring society



Conduct
careful
research



Respect
ecological
context and
limits of each
site



Build
on sustainable
practices of the
past



Employ
new methods
prudently.



Conserve
materials
and energy



Support
local economies



Design
biologically &
culturally
diverse
communities



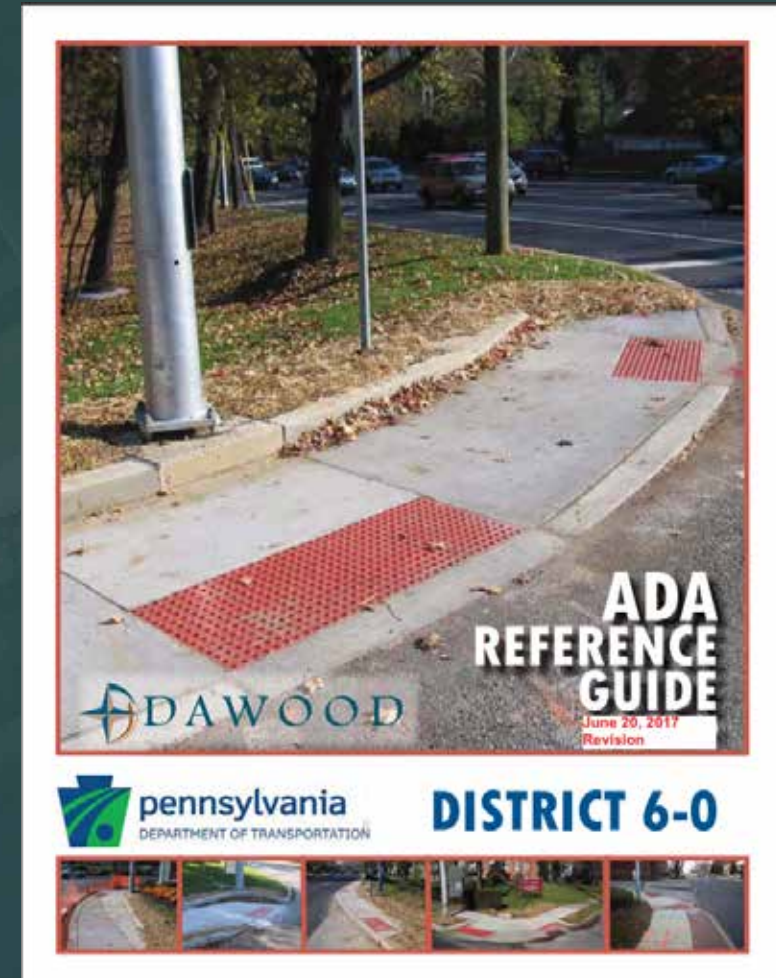
Simone Collins Landscape Architecture

- Founded 1990 – 34th year of service
- Staff of 12 – including: 3 registered LA principals, 1 P.E., 1 AICP
- “Connectivity Projects” – 120+ since 1993
- Public Participation experience – extensive, including controversial projects
- Successful funding strategies – for municipal, county, and NGO clients
- 45 design awards – 17 for trails and bridge projects

Dawood services include highway/traffic, structural, civil, geotechnical, mechanical engineering, survey and GIS services.

Experience:

- **Multimodal Improvement Project:** plan for traffic calming improvements on Seventh Street in Harrisburg, PA
- **ADA Ramp Submissions with PennDOT 6-0:** review and scoping efforts for ADA ramp packages submitted to PennDOT for construction
- **East-West Multimodal Connection:** signing and pavement marking configurations, raised crosswalk designs, and updates to signal permit plans for Chestnut Street in Harrisburg, PA
- **I-95, Section AFC:** signing, pavement marking, traffic control, temporary and permanent traffic signal design, trail design, and coordination with multiple agencies for multiple state routes surrounding I-95 on and off-ramps in Port Richmond area of City of Philadelphia



Scope of Services - Creation of a master plan for enhanced, safe bicycle and pedestrian infrastructure in and around Millerstown to enhance multi-modal transportation.

This planning process and these potential improvements are based on the recommendations as contained in the [Millerstown Economic Vitality Plan](#) as prepared by the Perry County Planning Commission and the Perry County Economic Development Authority.

Possible Multimodal Improvements

- Trail improvements to the community park and pool
- Town Square improvements for safety and to make it more people-oriented.
- Safer roadway crossing for school students.
- Improvements to highway ramps including better signage.
- Loop trail around the elementary and high schools
- Better pedestrian and bicycle connections to local destinations
- Set the stage for regional on-road bike routes to other destinations

Meeting Schedule

Public Meeting #2

Borough Council Meeting

- Monday, February 20th, 7pm to 9pm at Greenwood Elementary School
- Monday, April 1 at 7pm at Borough Hall, 44 North High Street
- *Key Person / Key Agency Interviews (community park / community pool/ first responders, School District, Borough officials, etc.)*
- *Meeting with PennDOT District 8-0, date TBD*

Public Meeting #3

Borough Council Meeting

- Tuesday, May 14, 7pm to 9pm at Greenwood Elementary School
- *Meeting with HATS, date TBD*
- Monday, June 3 at Borough Hall, 44 North High Street

Millerstown

Bicycle/Pedestrian Connectivity Master Plan
BOROUGH OF MILLERSTOWN, PERRY COUNTY, PENNSYLVANIA

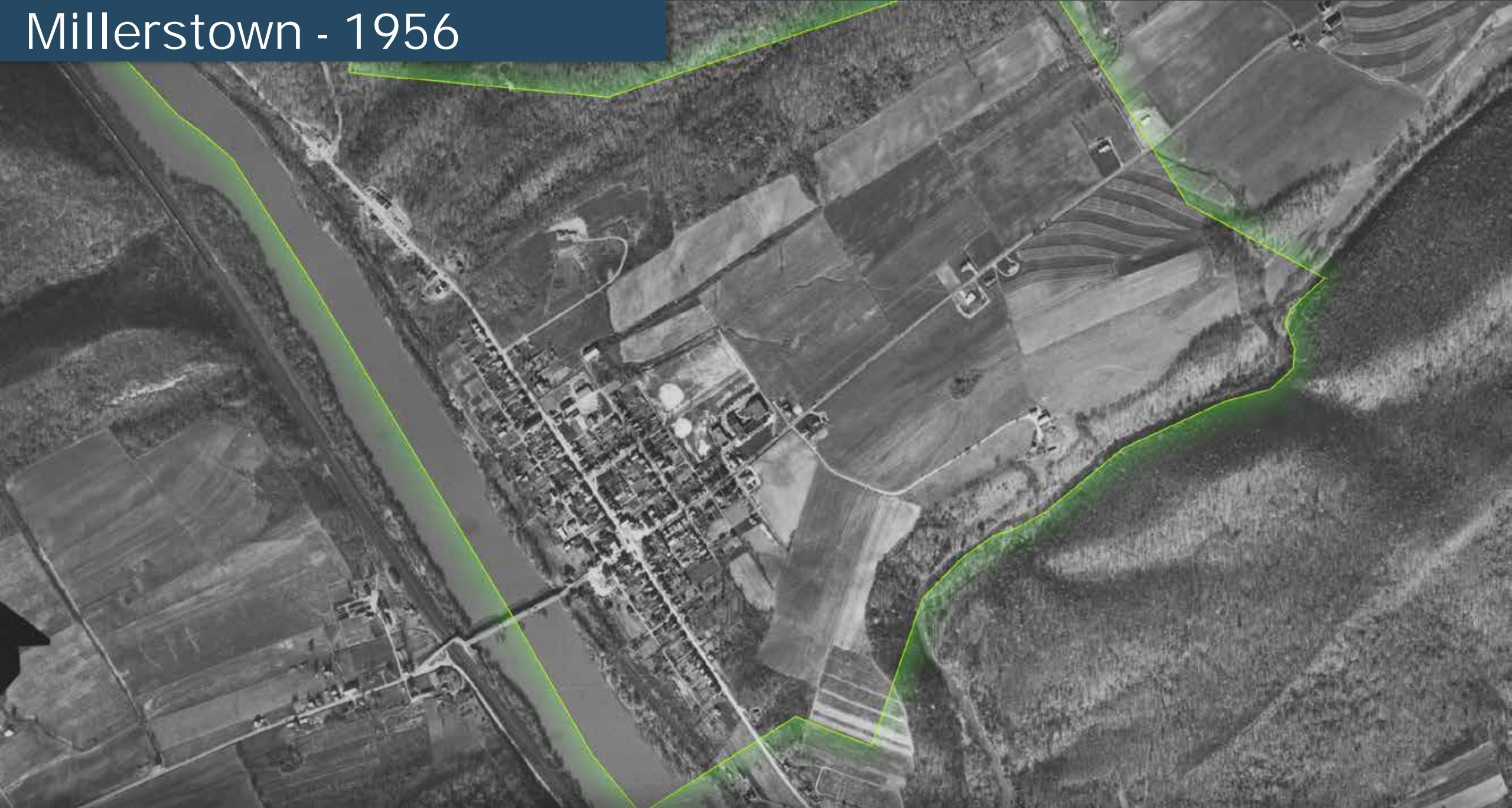
A Historic Look



Millerstown - 1938



Millerstown - 1956



Millerstown - 1970

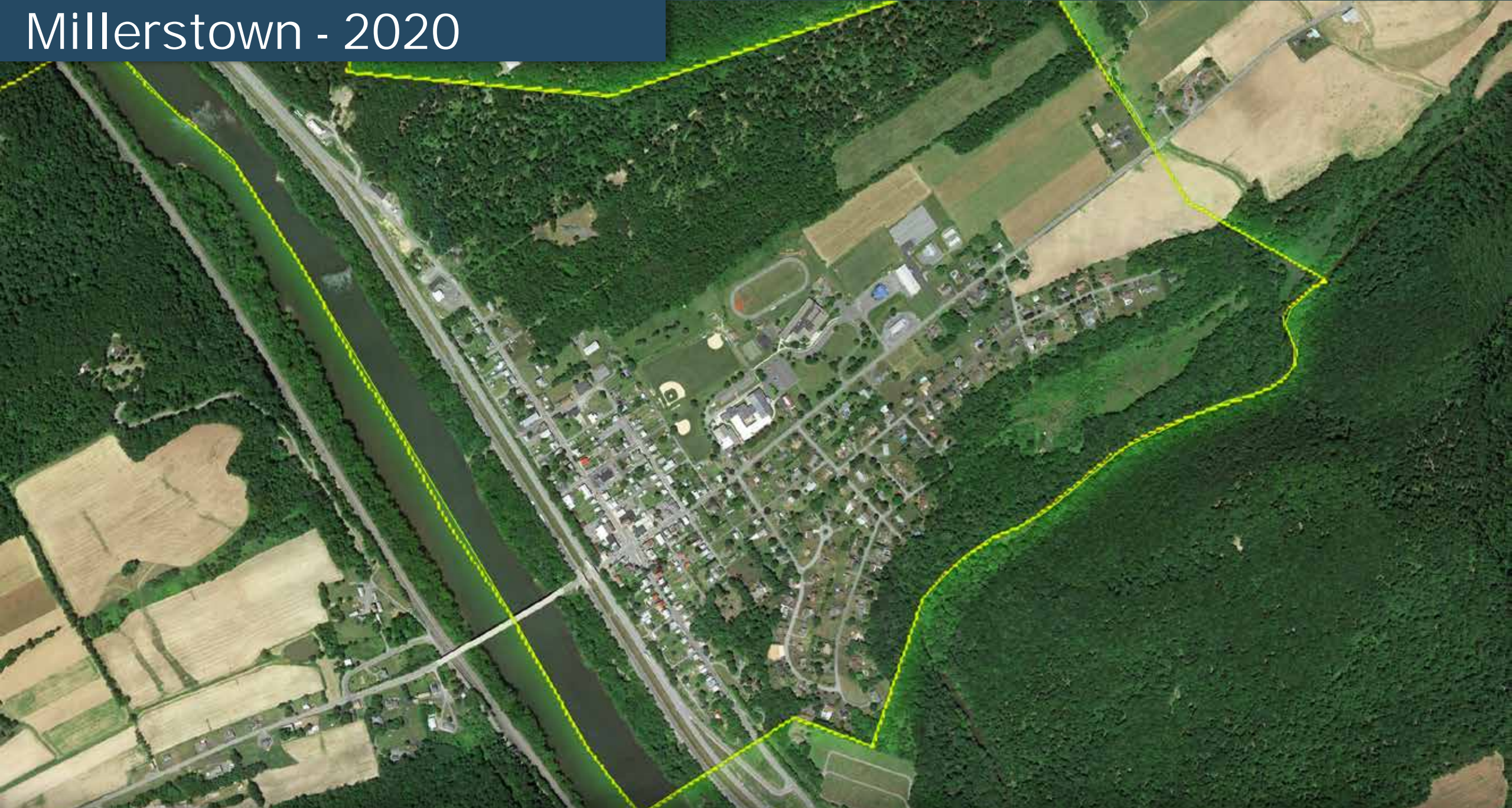


Millerstown - 1994



Millerstown - 2010





Millerstown

Bicycle/Pedestrian Connectivity Master Plan

BOROUGH OF MILLERSTOWN, PERRY COUNTY, PENNSYLVANIA

Inventory



Millerstown - Inventory



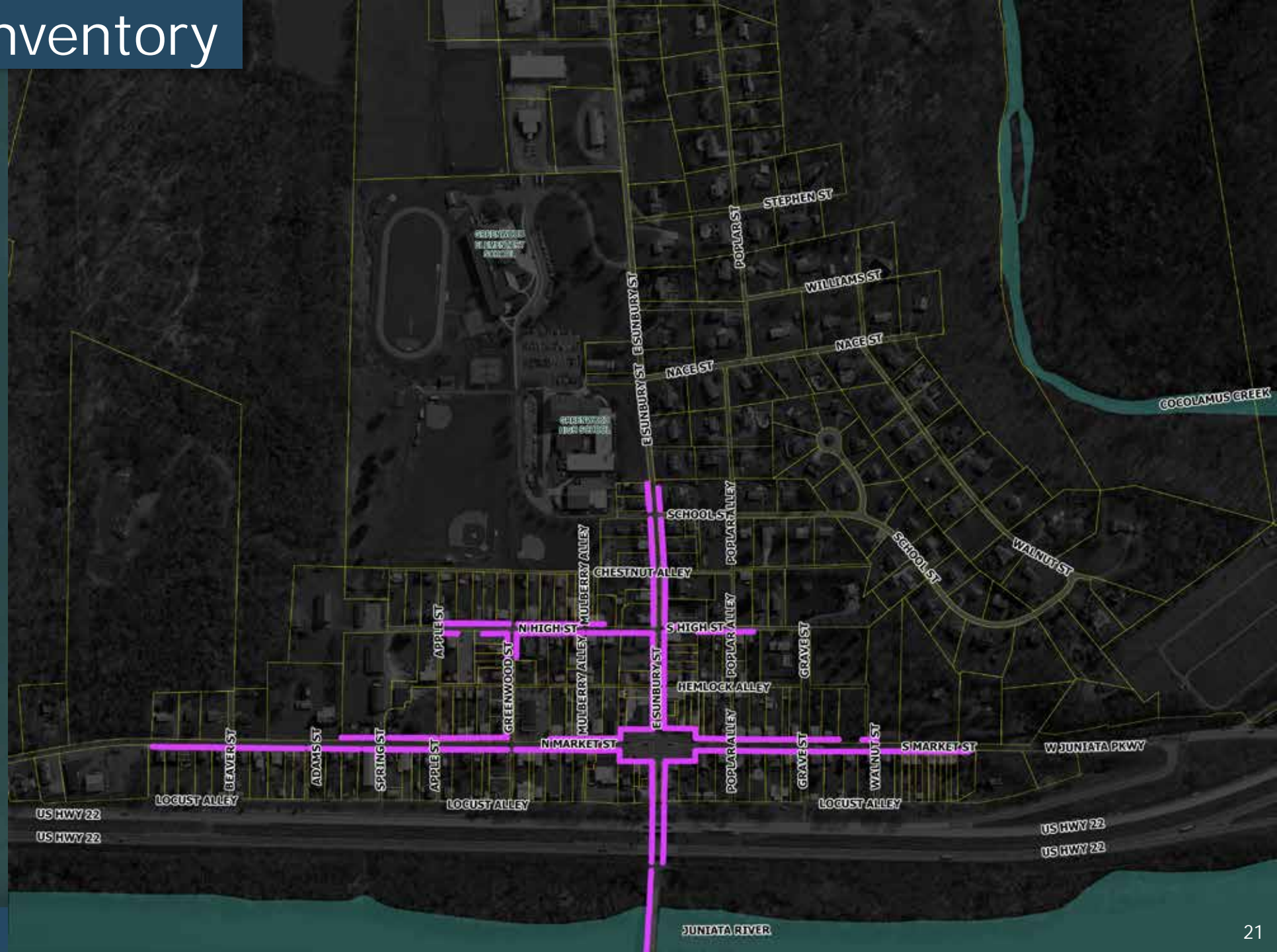
Millerstown - Inventory



Millerstown - Inventory

LEGEND


 Sidewalk

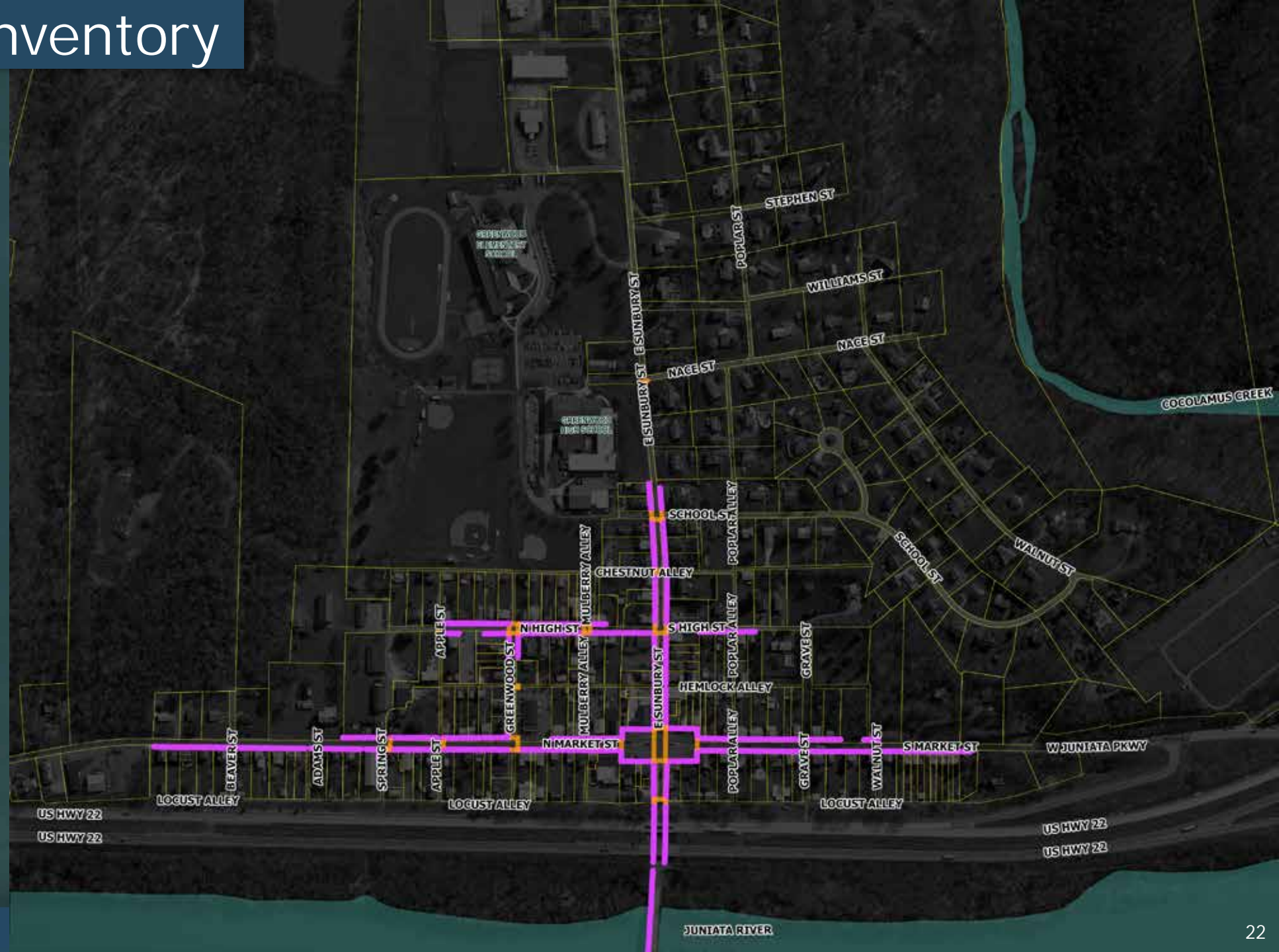


Millerstown - Inventory

LEGEND

 Sidewalk


 Crosswalk



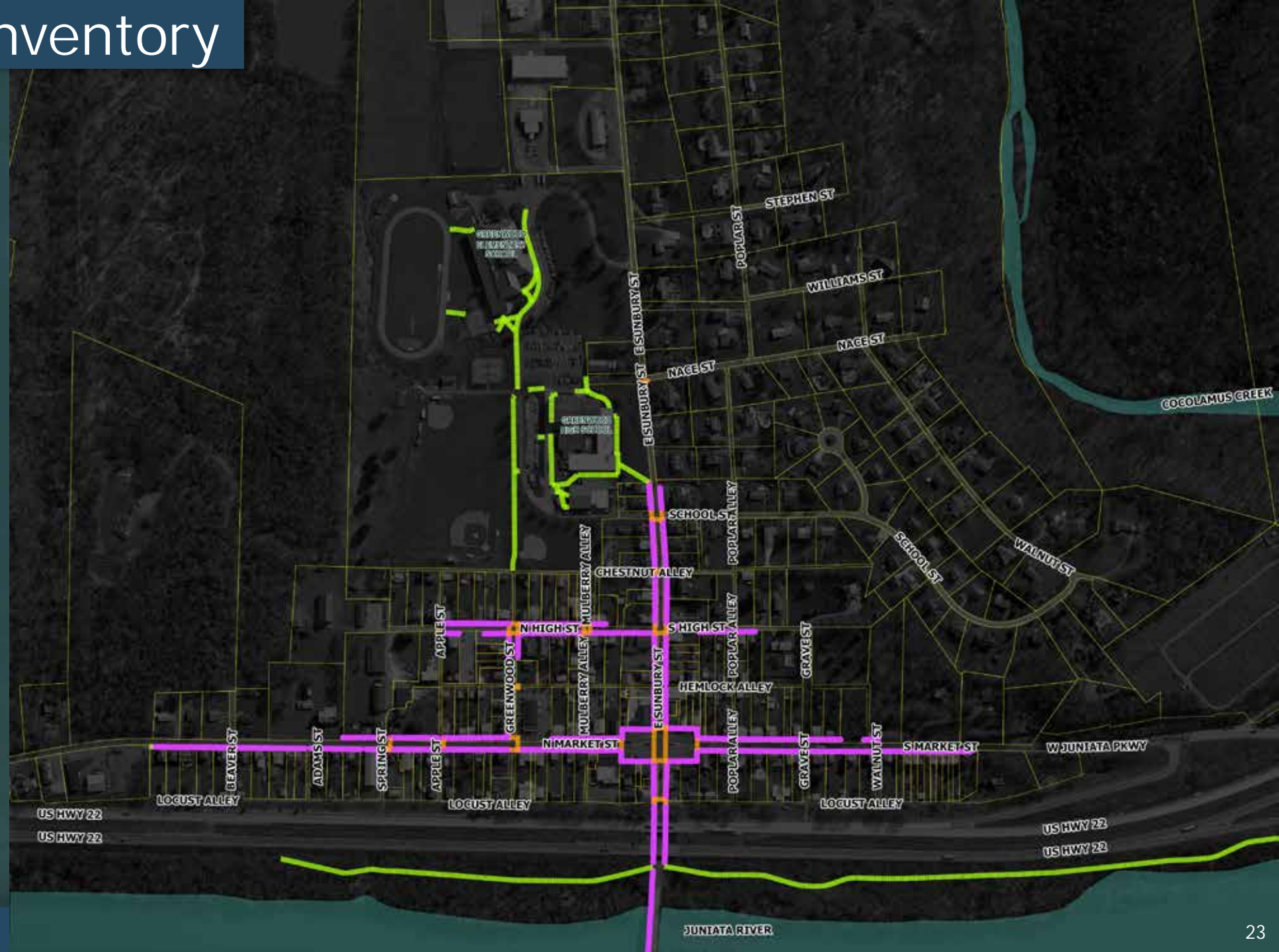
Millerstown - Inventory

LEGEND

 Sidewalk

 Crosswalk


 Walkway



Millerstown - Inventory

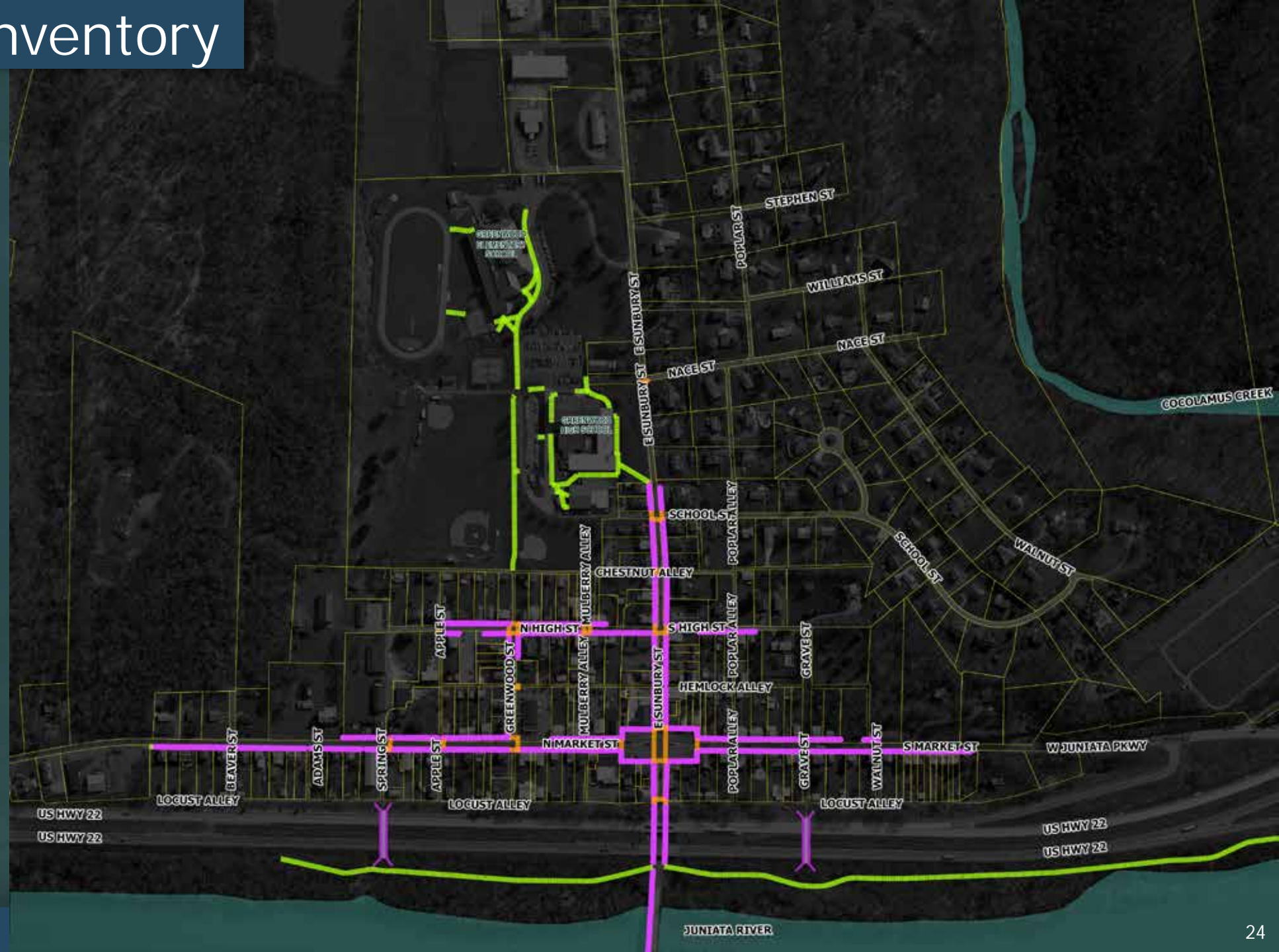
LEGEND

 Sidewalk

 Crosswalk

 Walkway

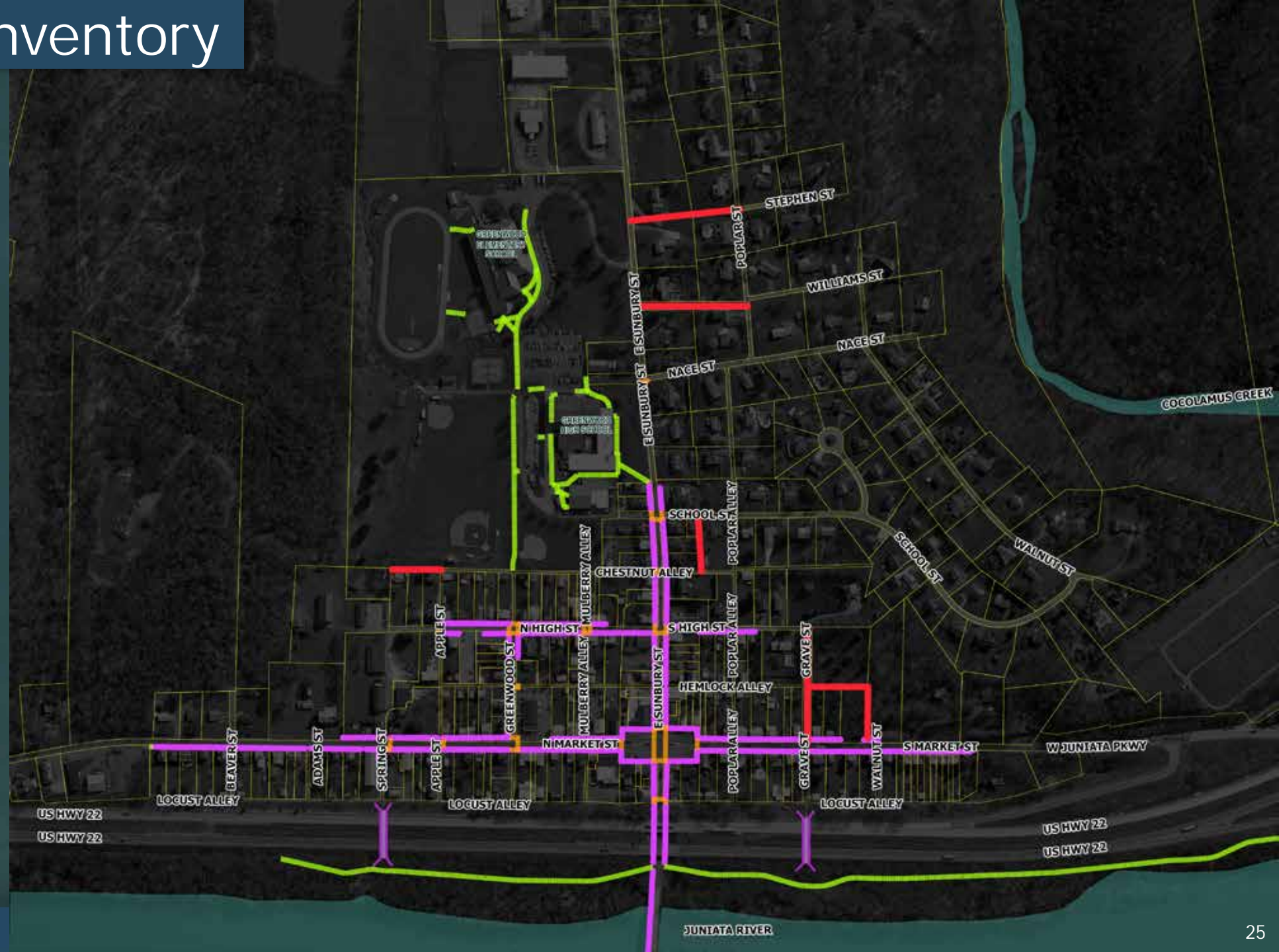
 Underpass



Millerstown - Inventory




LEGEND

-  Sidewalk
-  Crosswalk
-  Walkway
-  Underpass
-  Paper Street



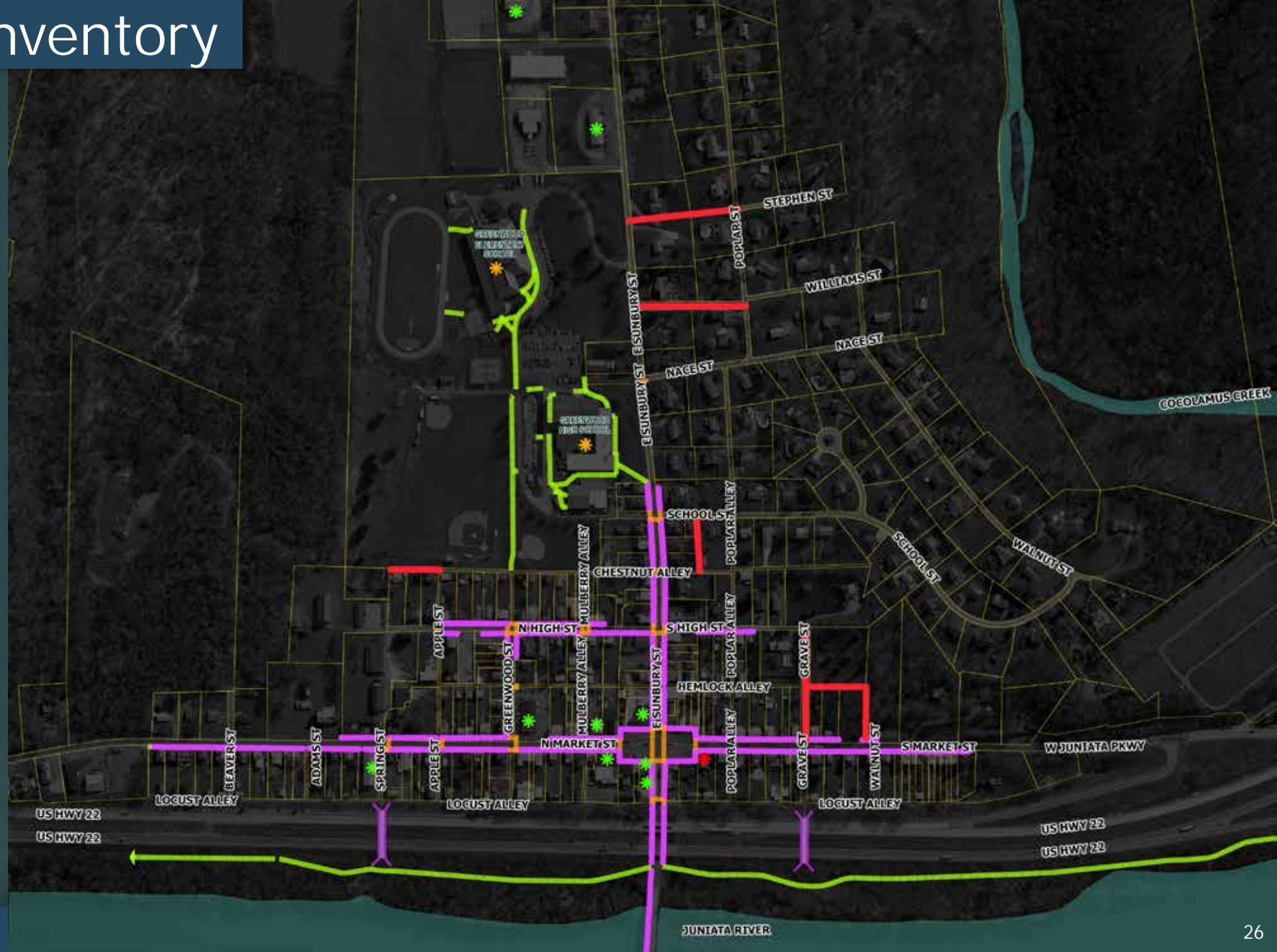
Millerstown - Inventory

LEGEND



-  Sidewalk
-  Crosswalk
-  Walkway
-  Underpass
-  Paper Street

DESTINATIONS

-  School
-  Business
-  Restaurant





LEGEND

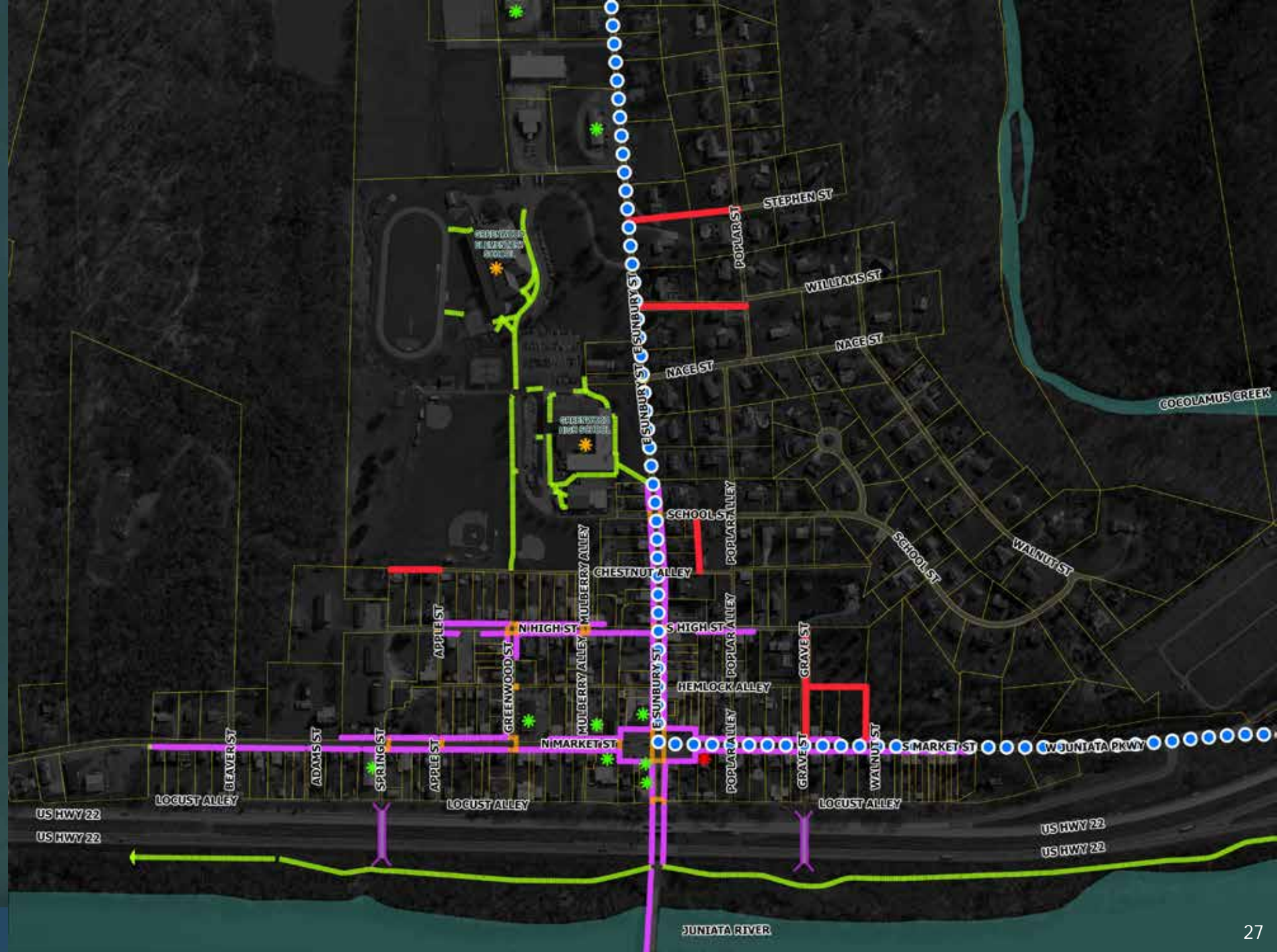
-  Sidewalk
-  Crosswalk
-  Walkway
-  Underpass
-  Paper Street

DESTINATIONS

-  School
-  Business
-  Restaurant

PLANNED TRAILS

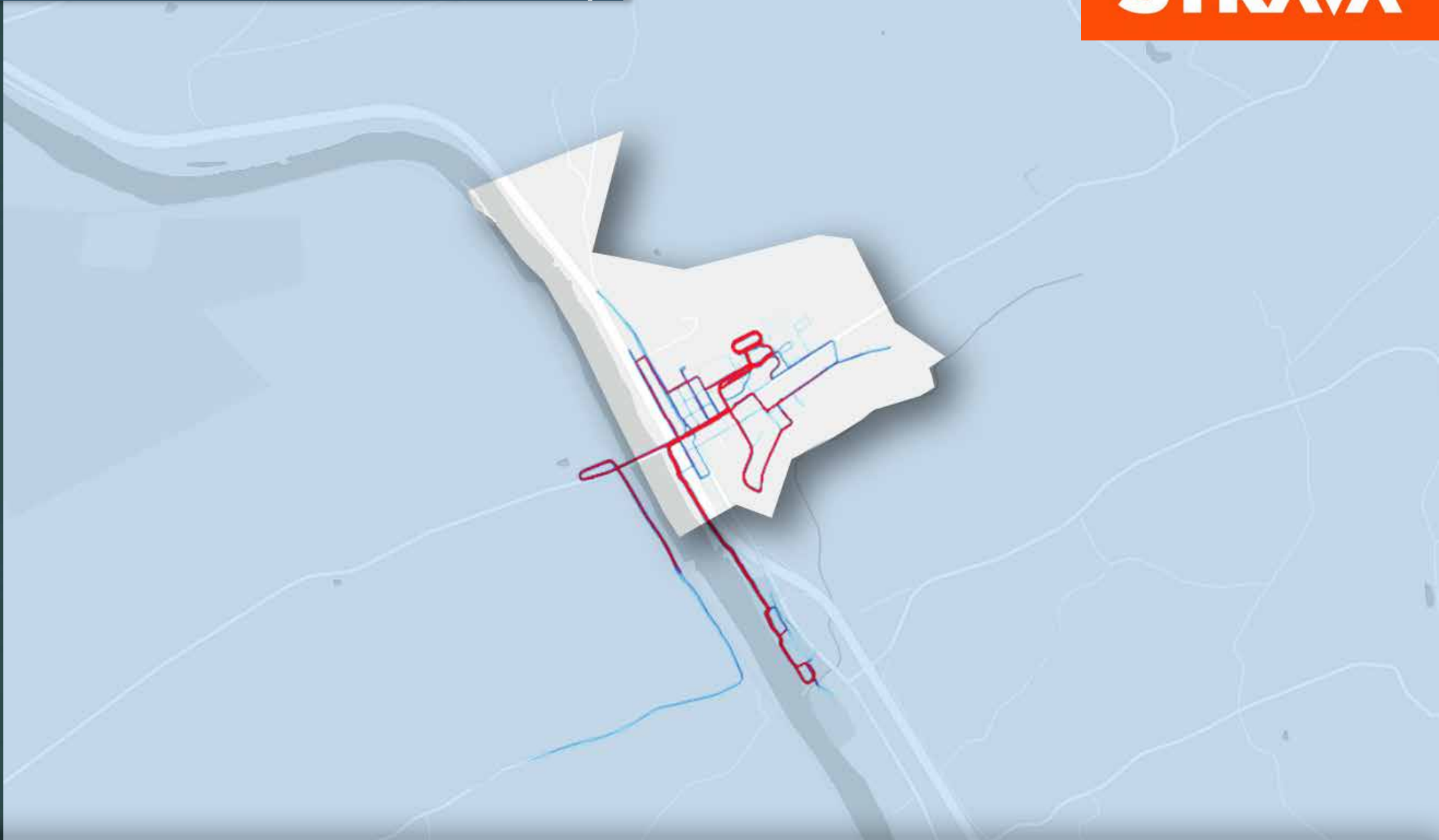
-   911 National Memorial Trail



Millerstown – STRAVA Heatmap

STRAVA

Run



Heat Map Legend

High Volume

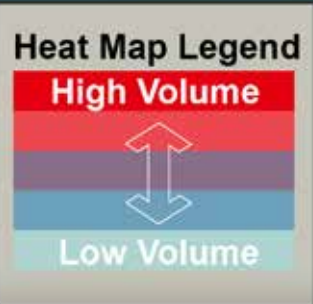


Low Volume

Millerstown – STRAVA Heatmap



Ride



Millerstown

Bicycle/Pedestrian Connectivity Master Plan

BOROUGH OF MILLERSTOWN, PERRY COUNTY, PENNSYLVANIA

Existing Conditions



Existing Conditions – Site Tour



Existing Conditions – Site Tour



Existing Conditions – Site Tour



Existing Conditions – Site Tour



Existing Conditions – Site Tour



Existing Conditions – Site Tour



Existing Conditions – Site Tour



Existing Conditions – Site Tour



Existing Conditions – Site Tour



Underpasses

Existing Conditions – Site Tour



Boat Launch / Swimming area



Existing Conditions – Site Tour

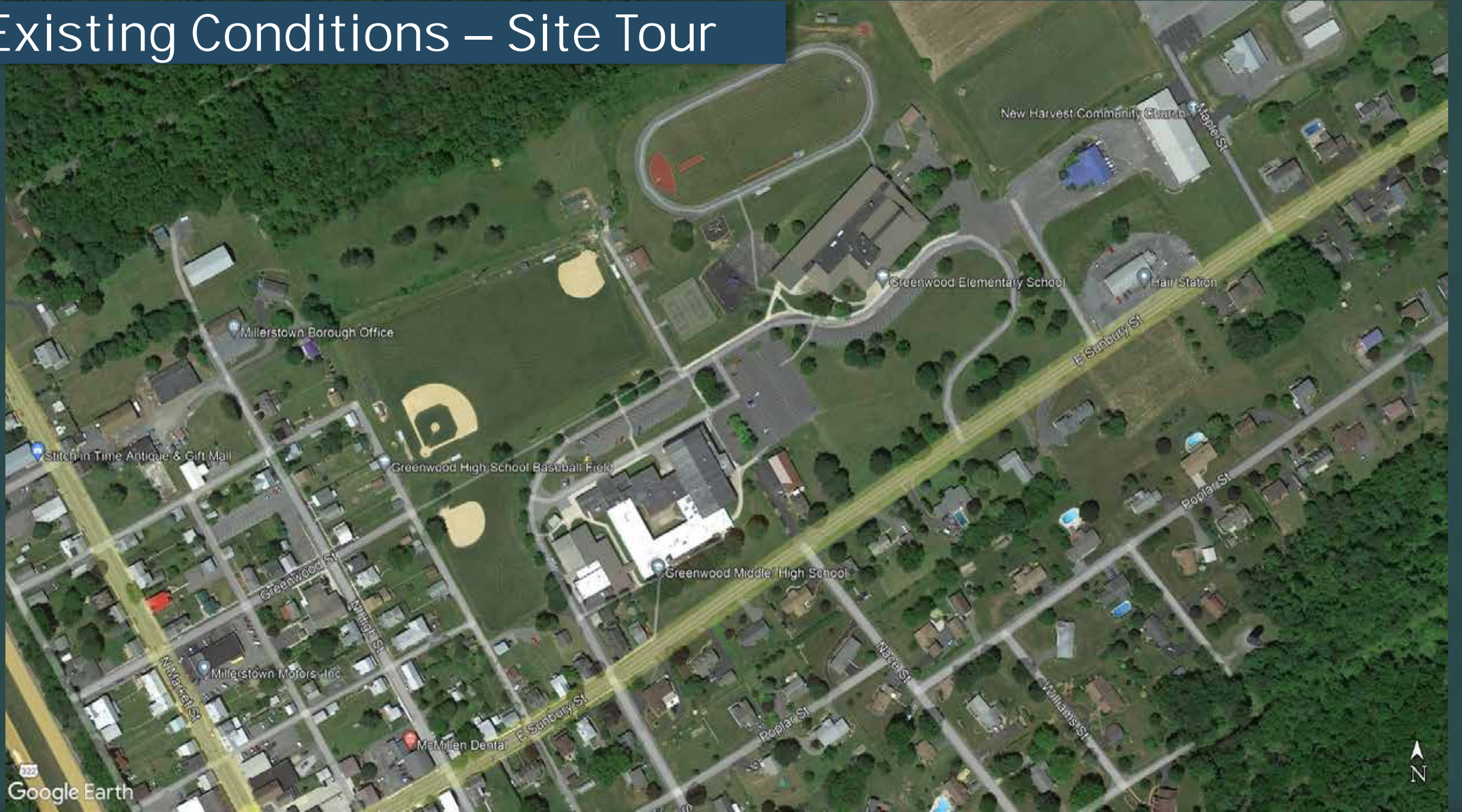


Existing Conditions – Site Tour



Millerstown Community Pool

Existing Conditions – Site Tour



Google Earth

Existing Conditions – Site Tour



Drainage Inlets

Existing Conditions – Site Tour



Sunbury Street



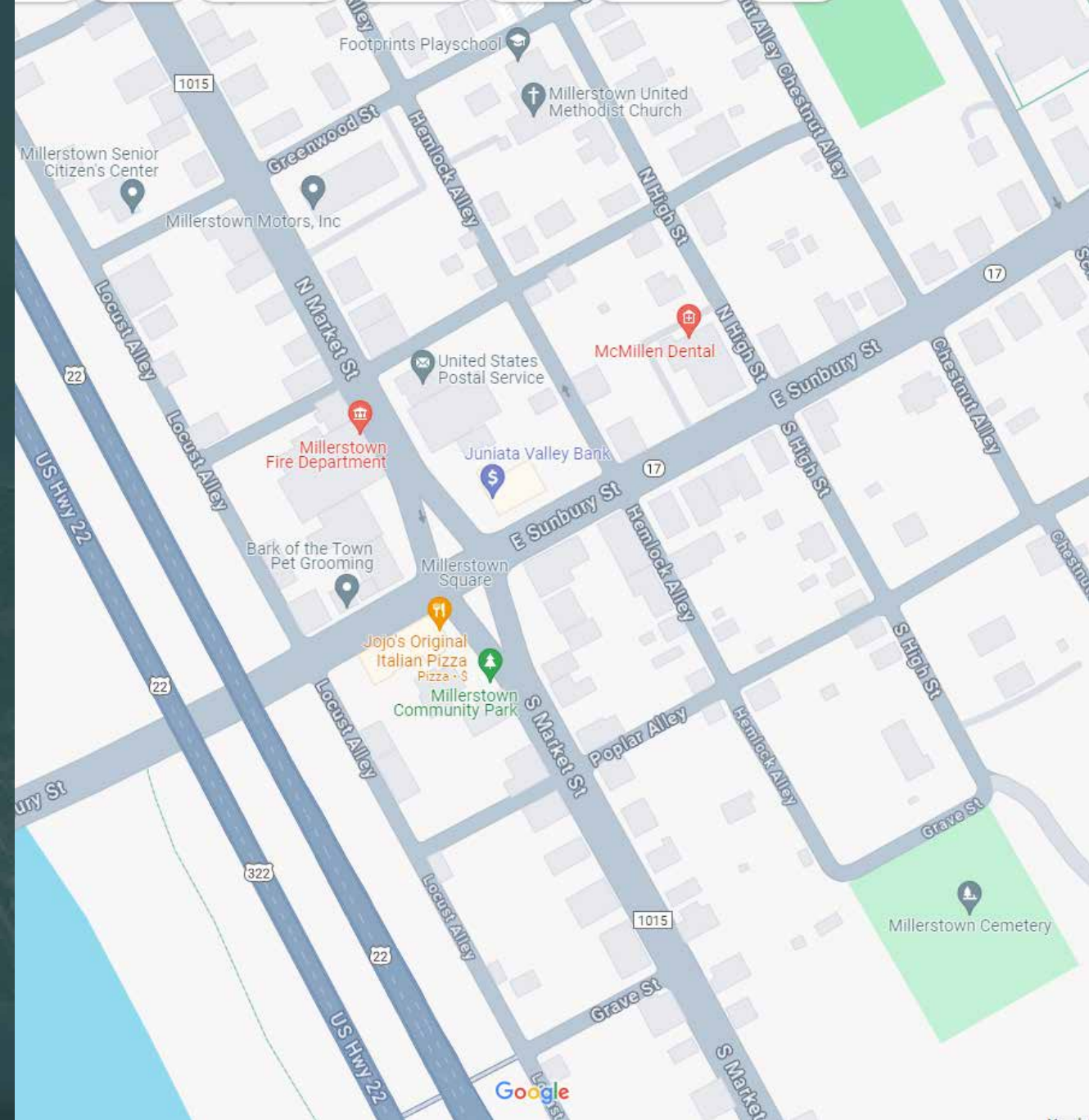
Existing Conditions – Site Tour



Future Development?

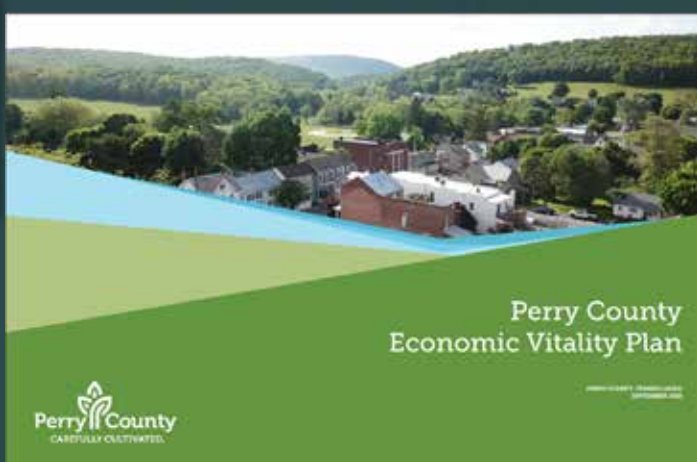
Businesses / Destinations

- New general store SW corner of Market and Sunbury
- Junita Valley Bank
- JoJo's Pizza and subs
- Antique and gift mall
- Burns plumbing and heating
- Mastracchio's restaurant & Lounge
- J. Russell and Sons (garage) oil?
- Bark of the Town (west of square) still there?
- Millerstown Fire Department
- Millerstown Post Office
- Millerstown Motors
- McMillen Dental (east of Square on Sunbury)
- Greenwood Medical Center (east of Sunbury)
- New Harvest Community Church (east of Sunbury)
- PEMF Supply (east on Sunbury)



Millerstown Economic Vitality Plan

<https://perrycountyeda.com/downtown-revitalization/>



Perry County
Economic Vitality Plan



Millerstown, Pennsylvania
Economic Vitality Plan



COMMUNITY CHARACTER MILLERSTOWN

Distinctively located between two mountain ridges on the east banks of the Juniata River, Millerstown is the only borough with significant riverfront access. While Route 322 passes between the river and downtown, two underpasses provide clear and direct river access and a boat ramp. Additionally, Millerstown Community Park, connected to downtown by a riverfront trail enjoys significant unobstructed river frontage. While 322 bypasses the downtown, Millerstown has excellent visibility from the highway and direct access just to the south. Like other Perry County boroughs, Millerstown Square is the heart of the community and has seen recent public and private investment. Outstanding schools and neighborhoods are located within walking distance of the square. In addition to its river access, the park is an outstanding amenity that includes passive and active recreation including a pool and is a valuable resource for all of Perry

County Millerstown does experience some challenges. These include ongoing maintenance and operations for the pool, breaks in pedestrian connectivity, particularly to the schools, lack of lighting along the trail, constrained growth boundaries, and stormwater runoff. Millerstown also has the opportunity to better capture travelers along Rt. 322 and using the park for revenue-generating events.



RECOMMENDATION

Future Growth: Plan for and manage future growth.

Adjacent farmland may present an opportunity for additional residential development. It will be important that any new development be an extension of the borough's gridded neighborhoods and not developed as a separate gated enclave.

Actions

Future Street Network: Plan for a gridded street network that includes interconnected streets and walkable blocks (ideally about 400' block lengths) that connect into existing streets.

Streetscape: Provide sidewalks and street trees along all new streets to promote walkability, particularly to the schools and square.

MILLERSTOWN | PERRY COUNTY ECONOMIC VITALITY PLAN

COMMUNITY CHARACTER MILLERSTOWN

RECOMMENDATION

Millerstown Square: Build upon recent investments and continue to enhance the square.

Actions

Crosswalks: Install broad crosswalks at each end and in the middle of the square to delineate to motorists that this is a pedestrian environment.

Paving: Consider stamped asphalt paving within the square to distinguish it from surrounding roadways.

Canopy Trees: Explore opportunities to install upright canopy trees at the four corners of the square to provide shade. This may require re-striping parking spaces or eliminating some parking spaces.

Parklets: Incorporate temporary gathering areas to allow for more outdoor dining and activity on the square.

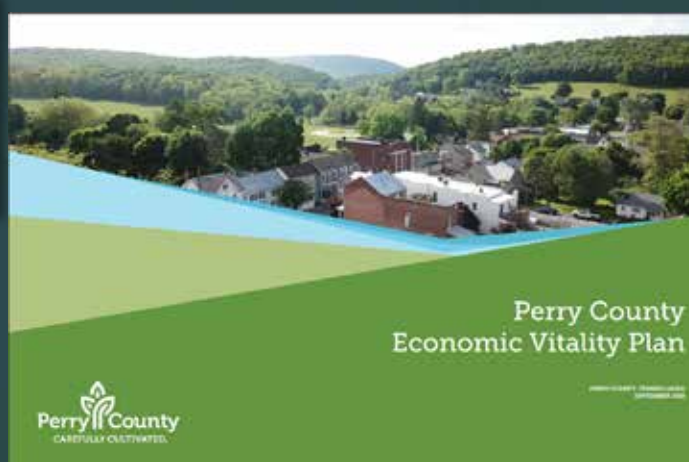
Juniata Valley Bank Site: Should this use ever change and the site redevelop in the future, replace the building with a building that is more appropriate to the square. The setback should match other buildings, any new structure should be two-three floors, and roof lines and building forms should be compatible with other buildings on the square.



MILLERSTOWN | PERRY COUNTY ECONOMIC VITALITY PLAN

Millerstown Economic Vitality Plan

<https://perrycountyeda.com/downtown-revitalization/>



COMMUNITY CHARACTER MILLERSTOWN

RECOMMENDATION

Pedestrian Enhancements: Improve existing sidewalks and trail to promote walkability and pedestrian safety between the square, schools and park.

Actions

Sidewalk Extensions: Extend sidewalks along East Sunbury Street to provide better connections to the schools.

Crosswalks: Provide a highly visible crosswalk at Nace and East Sunbury Streets to connect the neighborhood and schools.

Lighting: Provide pedestrian lighting along the trail connecting the Grave Street underpass with the park.

Pedestrian Underpass: Enhance the Grave Street underpass with public art and lighting.

Street Trees: Work with property owners to secure easements to allow for street tree planting along East Sunbury Street to enhance the gateway to downtown and provide shade and comfort for pedestrians.



MILLERSTOWN | PERRY COUNTY ECONOMIC VITALITY PLAN

WAYFINDING SIGNAGE MILLERSTOWN

The wayfinding system should be introduced as part of the brand because it plays such an important role in the perception and flow of your community.

PRIMARY GATEWAYS: These gateways are the primary intersection points and main entry ways to town. They need to be highly visible and introduce the brand.

BUILDING MARKERS: The markers can be either wall mounted or monument style and denote important landmarks in the downtown district.

TRAILBLAZERS: Trailblazers are the directing signs leading motorists to the main attractions in the area. These should have a maximum of three locations per sign and carry motorists from gateway to parking lot. Colors can be used to distinguish between different districts and can become smaller as the scale and speed of the roadway narrows.

STREET BANNERS: Banners are very popular and help to add color and movement to the lanes of travel acting as a speed calming device. They too can be color coded by district and can promote local events, as well as promoting the brand.

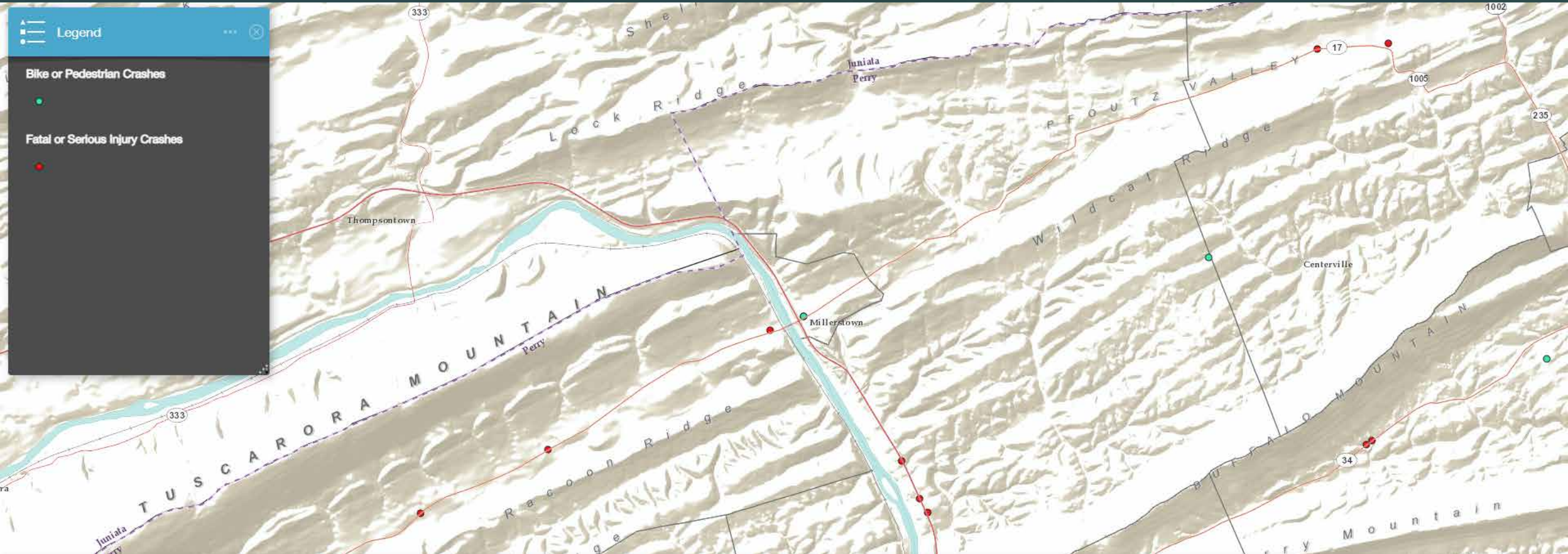
PARKING SIGNAGE: Identifying parking is important in creating a parking system in downtown. Visitors are more likely to walk a block or two to shop if the signage system leads them directly to a public parking lot and tell them how to proceed. The parking markers can be by themselves or as attachments to trailblazer signs.



Proposed wayfinding design for the county with community specific wayfinding signage system.

MILLERSTOWN | PERRY COUNTY ECONOMIC VITALITY PLAN

Millerstown – Crash Data



Millerstown

Bicycle/Pedestrian Connectivity Master Plan
BOROUGH OF MILLERSTOWN, PERRY COUNTY, PENNSYLVANIA

Connectivity 101



Walk & Bike– a multi-modal primer



User Groups – pedestrians

Pedestrians



User Groups – active lifestyles

Pedestrians



Active Lifestyles



User Groups – Cyclists (3 levels)

Pedestrians



Active Lifestyles



Cyclists

Experienced



Casual



Child



User Groups - other

Pedestrians



Active Lifestyles



Cyclists

Experienced



Casual



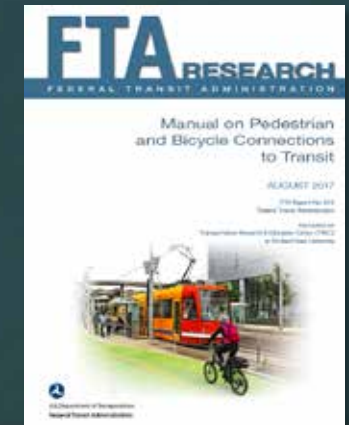
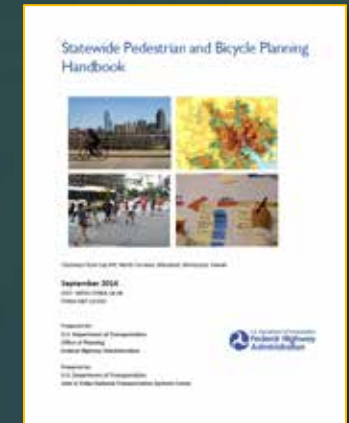
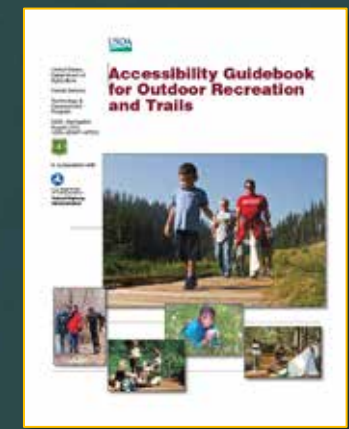
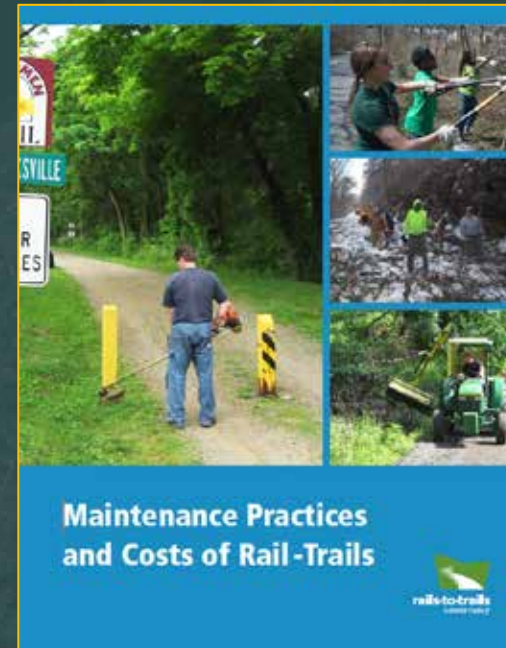
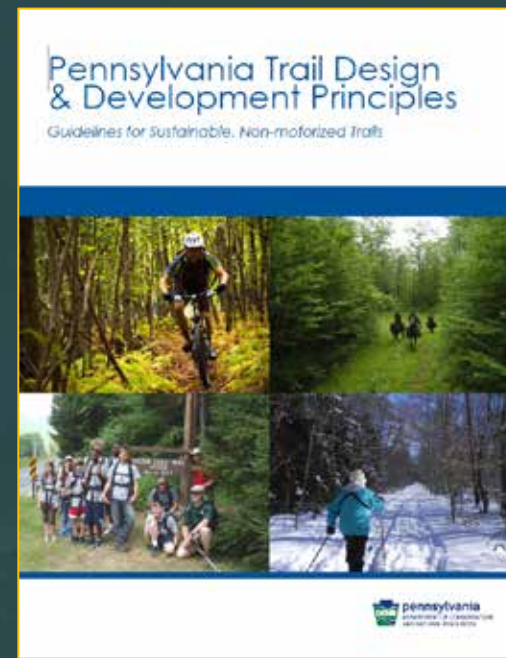
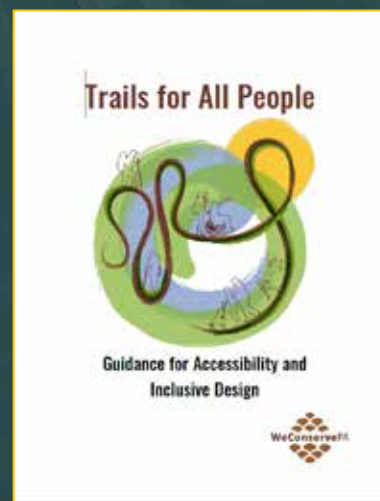
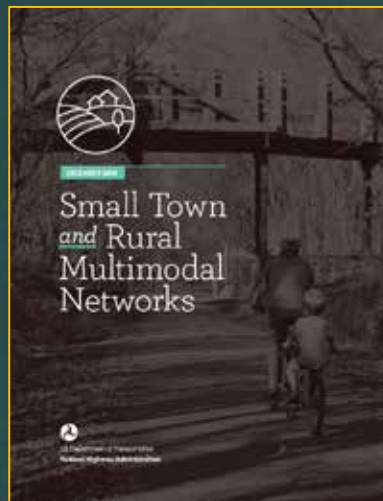
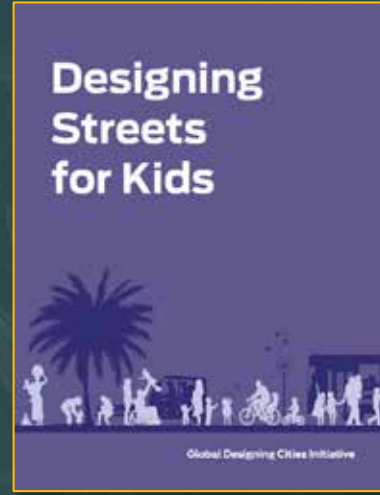
Child



Other Users



Design Standards



Design Standards - AASHTO

Guide for the Development of Bicycle Facilities

2012 • Fourth Edition

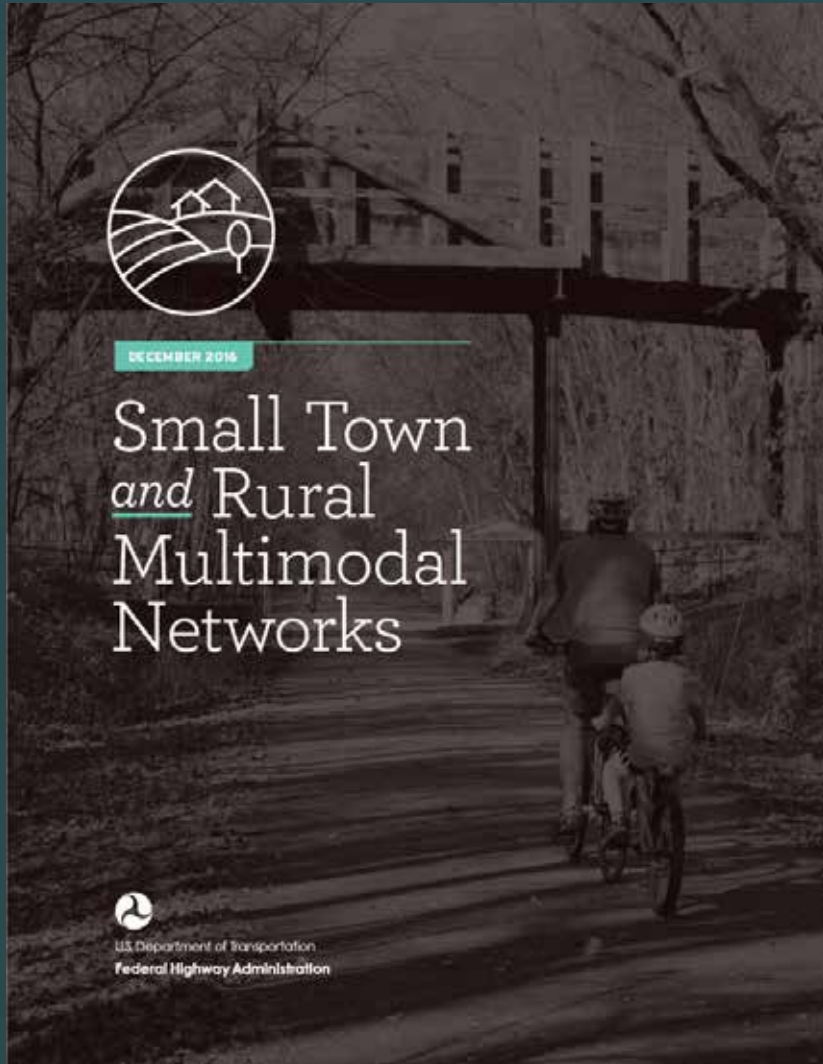


Prepared by the American Association of State Highway and Transportation Officials (AASHTO)

On-Road Facilities – Bicyclists ride within the existing cartway.

Shared-use Paths– Completely separated from the roadway. Also known as 'off-road trails', 'greenways,' 'shared use paths,' and/or 'multi-use paths'.

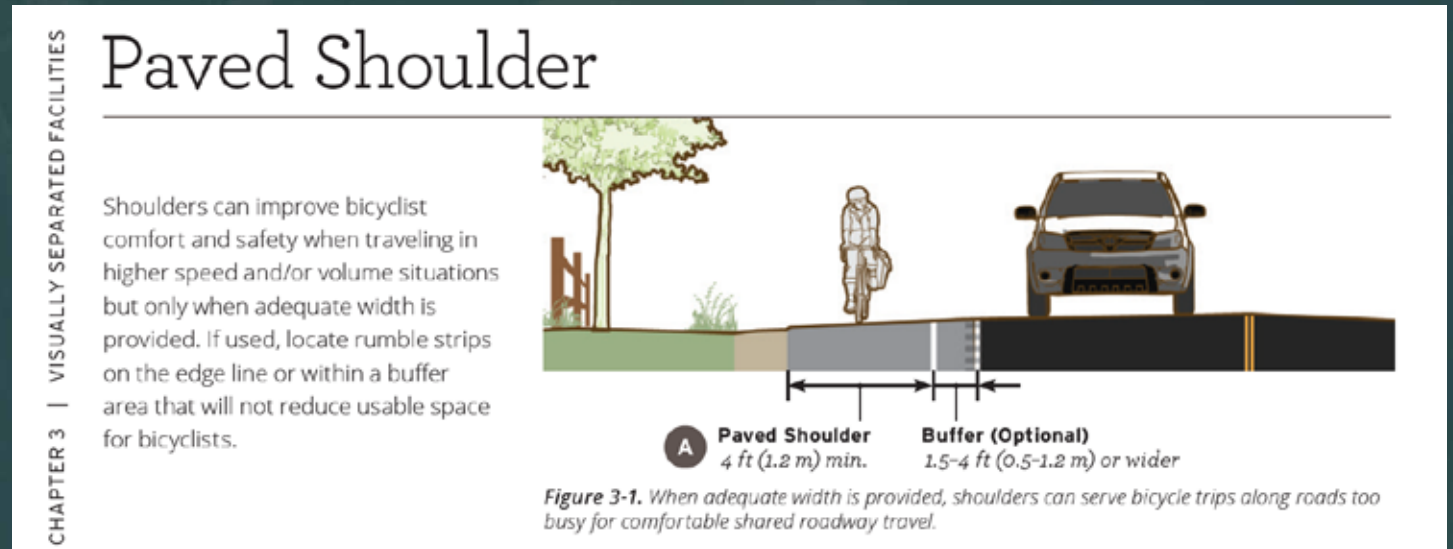




Provides design guidance for active transportation facilities in rural and small-town communities

Several facilities could be feasible for the Portland to Minsi Lake Trail given existing alignment conditions:

- Paved Shoulder
- Sidepath
- Advisory Shoulder
- Shared Use Path



Millerstown

Bicycle/Pedestrian Connectivity Master Plan
BOROUGH OF MILLERSTOWN, PERRY COUNTY, PENNSYLVANIA

Toolbox



Toolbox - Design Elements



Sidewalk



Crosswalk



Speed Cushion



Rapid Flashing Beacon



Pedestrian Refuge Island



Multi-Use Trail



Side Path



Sharrows



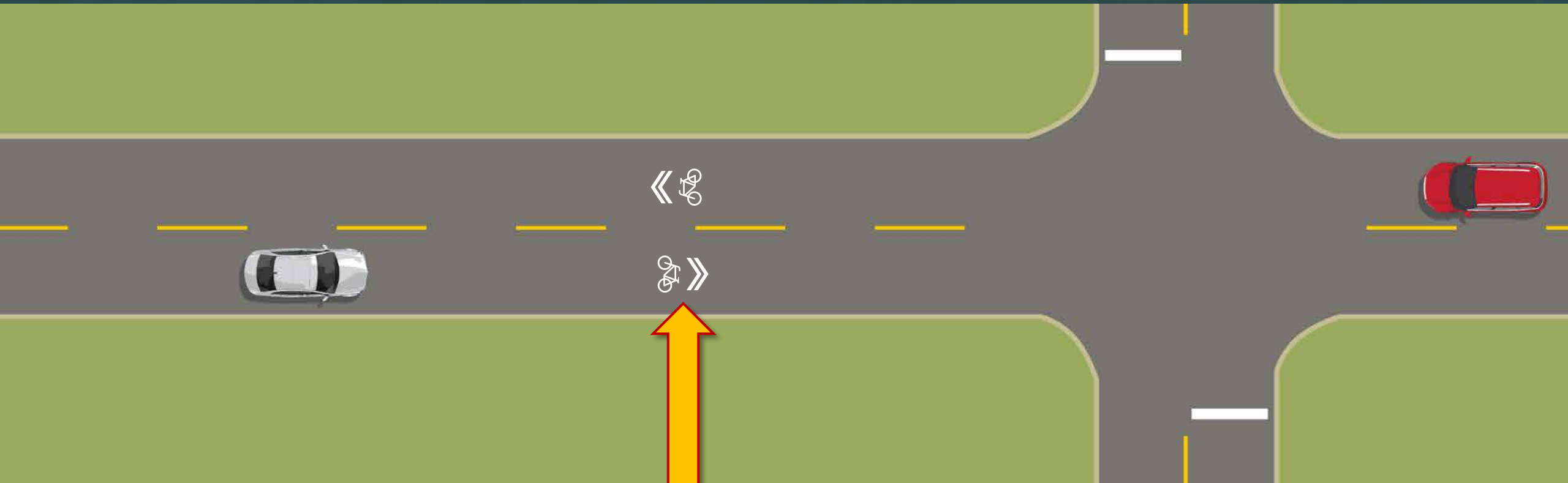
Bicycle Lane



Toolbox - How it works

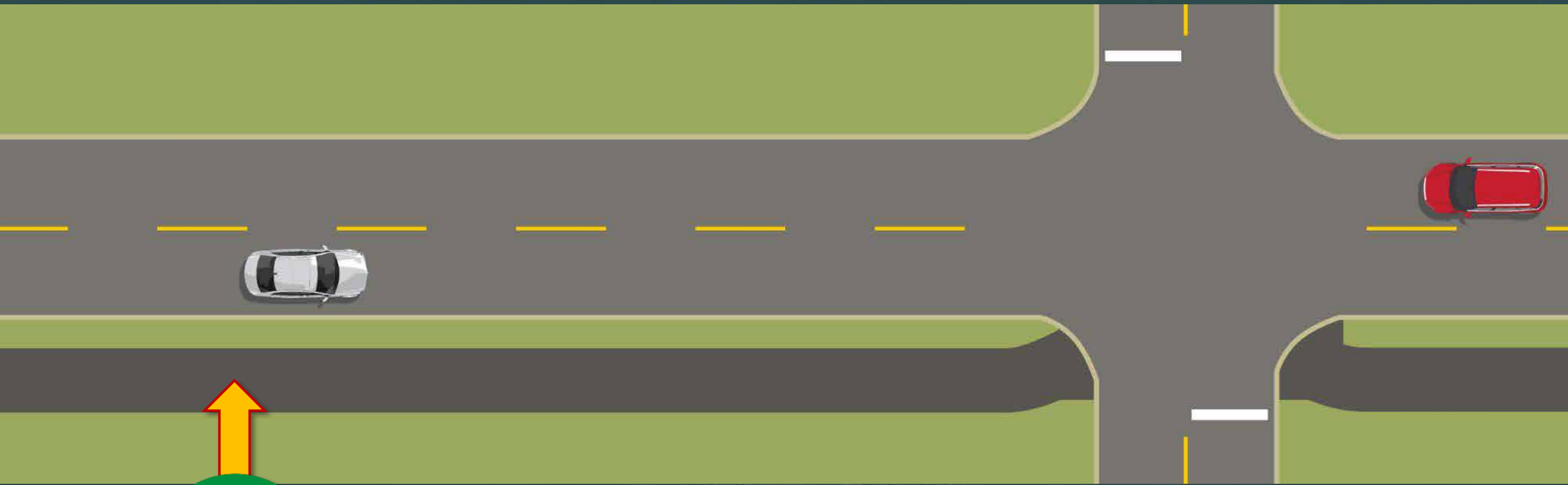


Toolbox - How it works



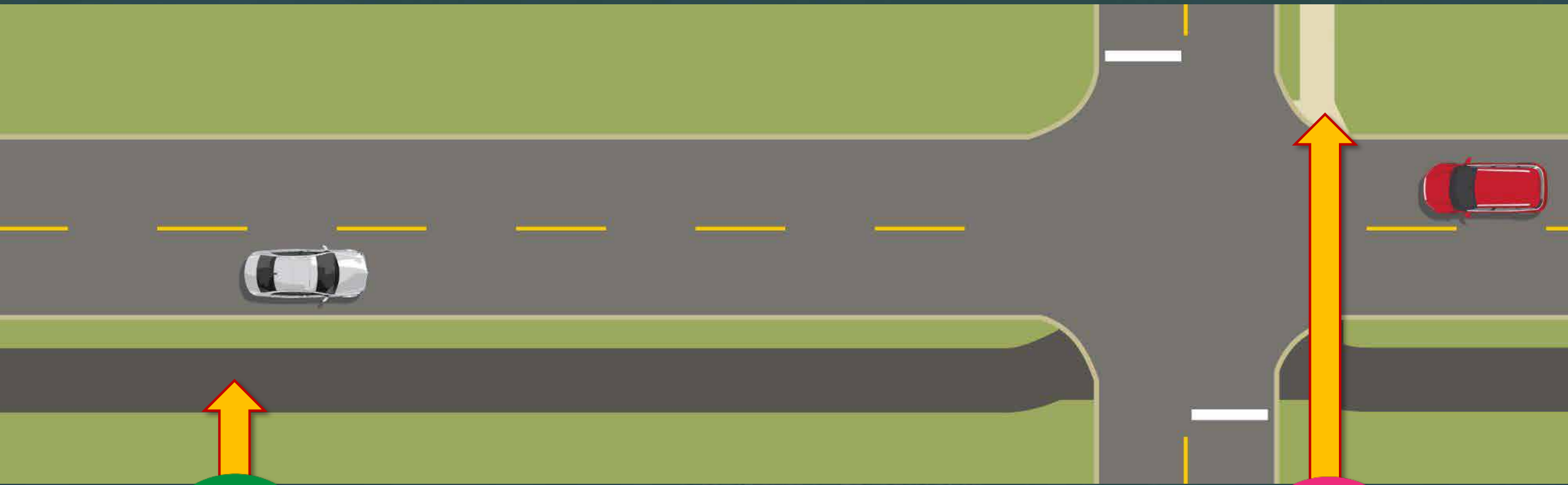
Sharrows

Toolbox - How it works



Side Path

Toolbox - How it works

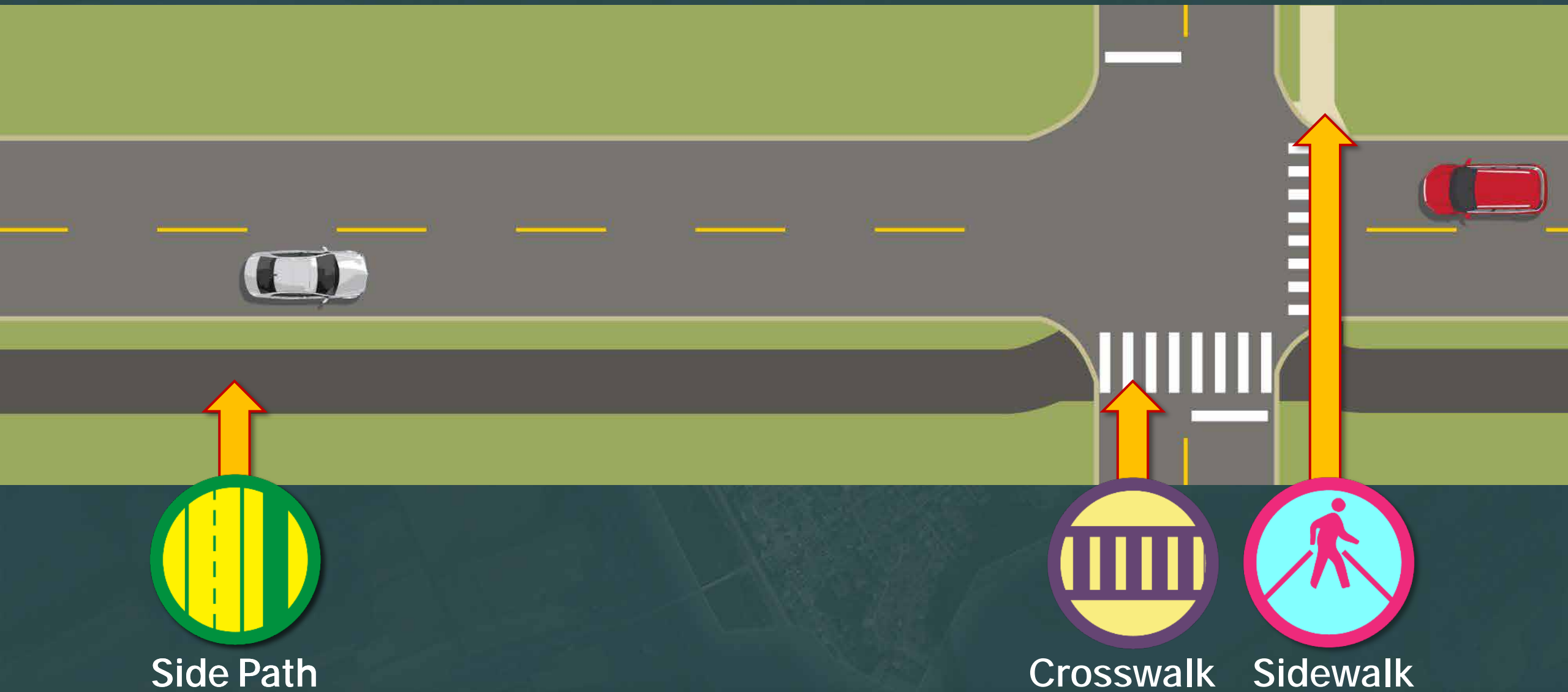


Side Path



Sidewalk

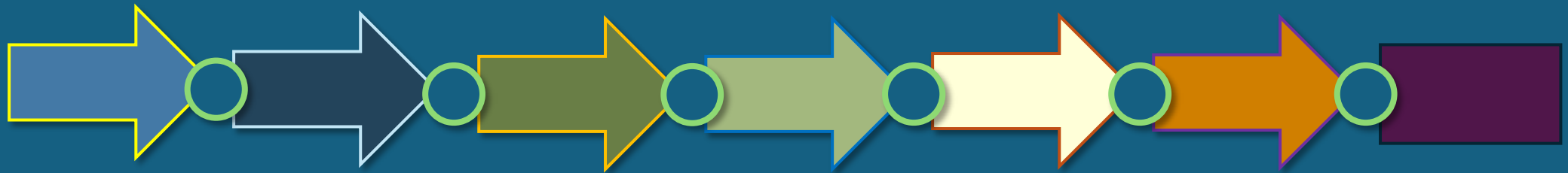
Toolbox - How it works



Millerstown

Bicycle/Pedestrian Connectivity Master Plan
BOROUGH OF MILLERSTOWN, PERRY COUNTY, PENNSYLVANIA

Next Steps



Presentation of Preliminary Concepts & Ideas



- Public Meeting**
 - Monday, February 20th, 7pm to 9pm at Greenwood Elementary School
- Borough Council Meeting**
 - Monday, April 1 at 7pm at Borough Hall, 44 North High Street
 - *Key Person / Key Agency Interviews (community park / community pool/ first responder, School District, Borough officials, etc.)*
 - *Meeting with PennDOT District 8-0, date TBD*
- Public Meeting**
 - Tuesday, May 14, 7pm to 9pm at Greenwood Elementary School
 - *Meeting with HATS, date TBD*
- Borough Council Meeting**
 - Monday, June 3 at Borough Hall, 44 North High Street

● Challenges ●

Where are the potential issues?
(place a **RED DOT** or draw any issues)

Examples:

- Private Property
- Challenging Intersections
- High Volume Traffic
- Narrow Roads

● Destinations ●

Where do you go?
(place a **BLUE DOT** on your destinations)

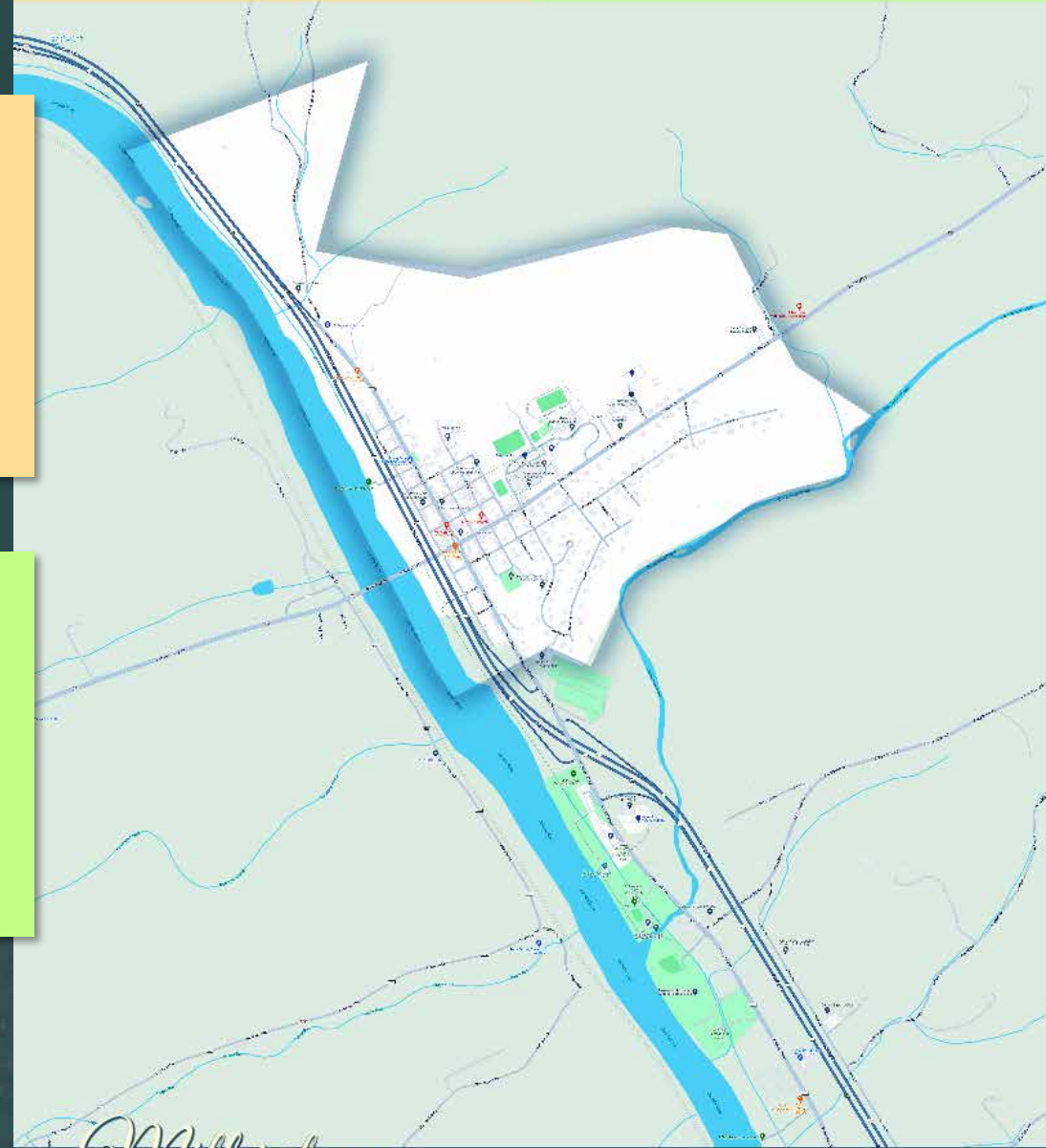
● Challenges ●

Where are the potential issues?
(place a **RED DOT** or draw any issues)

- Examples:
- Private Property
 - Challenging Intersections
 - High Volume Traffic
 - Narrow Roads

● Destinations ●

Where do you go?
(place a **BLUE DOT** on your destinations)



Millerstown

Bicycle/Pedestrian Connectivity Master Plan
BOROUGH OF MILLERSTOWN, PERRY COUNTY, PENNSYLVANIA



Millerstown

Bicycle/Pedestrian Connectivity Master Plan

BOROUGH OF MILLERSTOWN, PERRY COUNTY, PENNSYLVANIA

Discussion



Simone Collins

Peter Simone, RLA, FASLA
psimone@simonecollins.com
(610) 239-7601x12

Leonard Bustos, Staff LA
lbustos@simonecollins.com
(610) 239-7601x19

Geoff Creary, LA
gcreary@simoncecollins.com
(610) 239-7601x13

Dawood

Lori Ware, PE, PTOE
Manager of Traffic Services
Dawood Engineering, Inc.
lori.ware@dawood.net
(855) 432-9663 x1503

Christopher Cummings, EIT
Highway Designer II
Dawood Engineering, Inc.
christopher.cummings@dawood.net

Scott Bechard, AICP
Senior Transportation Planner
Dawood Engineering, Inc.
scott.bechard@dawood.net